

External cause of suicide by age

Age was unknown in 5 of the 354 cases. Of the remaining cases, the average age of the deceased was 35 (± 13.8 yrs). The leading external cause of death for suicide in the:

- 0-14 age group was hanging (40%) followed by firearms 40%);
- 15-24 age group was hanging (60%);
- 25-34 age group was hanging (57.5%);
- 35-44 age group was hanging (40.5%);
- 45-54 age group was hanging (34.5%);
- 55-64 age group was poisoning (38.1%); and
- 65+ age group was poisoning (38.5%) followed by firearms (30.8%).

Figure 13.1. Hanging suicide by age (n = 162)

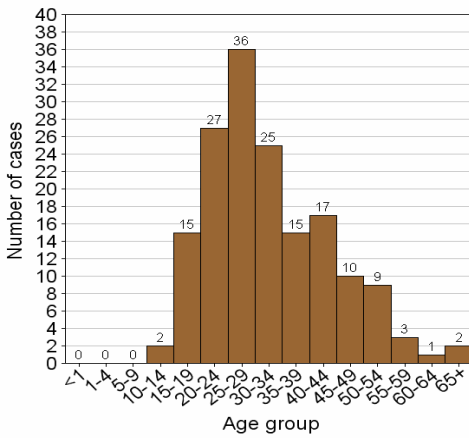


Figure 13.2. Poisoning suicide by age (n = 78)

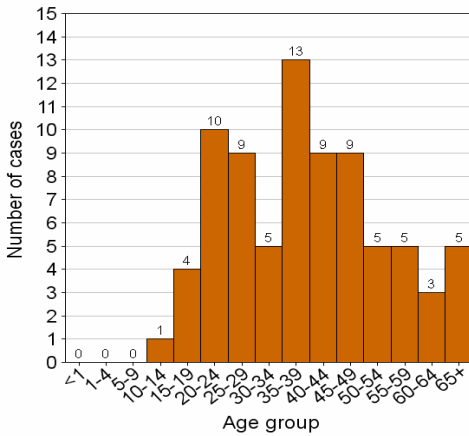


Figure 13.3. Firearm suicide by age (n = 64)

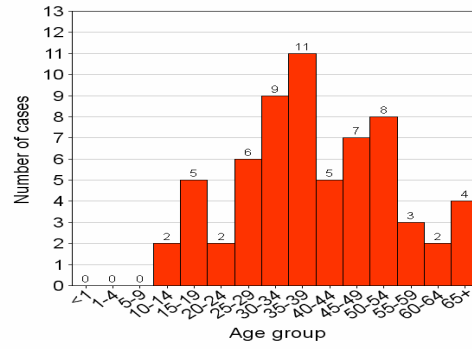


Figure 13.4. Gassing suicide by age (n = 21)

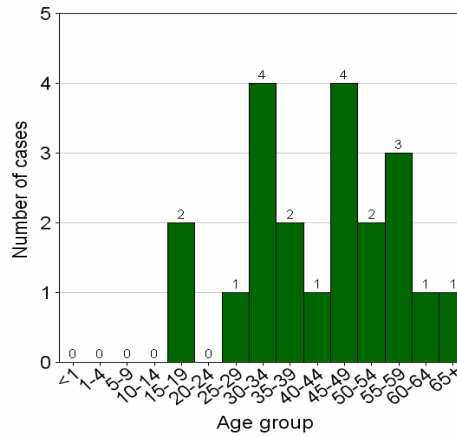
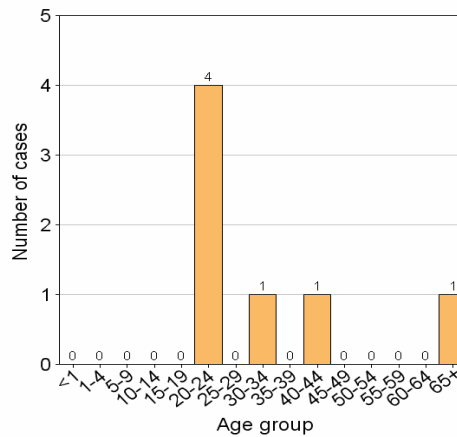


Figure 13.5. Jump from height suicide by age (n = 7)



External cause of transport deaths by age

Age was unknown in 11 of the 1051 cases. Of the remaining cases, the average age of the deceased was 33 (± 15.2 yrs). The leading external cause of death for transport in the:

- 0-14 age group was pedestrian injuries (75%);
- 15-24 age group was pedestrian injuries (40.4%);
- 25-34 age group was pedestrian injuries (44.4%);
- 35-44 age group was pedestrian injuries (57.8%);
- 45-54 age group was pedestrian injuries (57%);
- 55-64 age group was pedestrian injuries (51.9%); and
- 65+ age group was pedestrian injuries (57.6%).

Figure 14.1. Pedestrian deaths by age (n = 550)

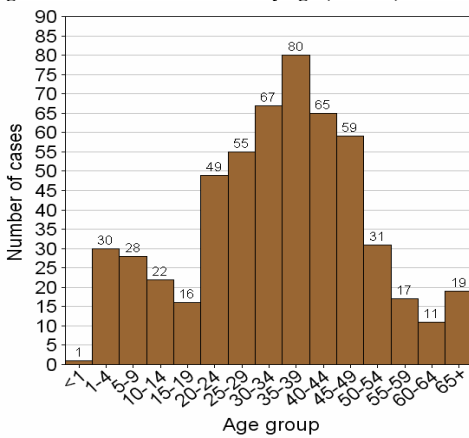


Figure 14.3. Driver deaths by age (n = 134)

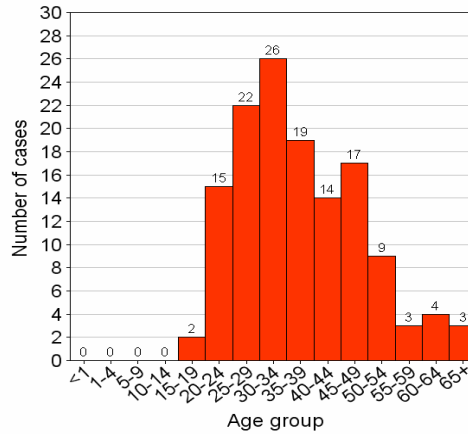


Figure 14.4. Railway deaths by age (n = 95)

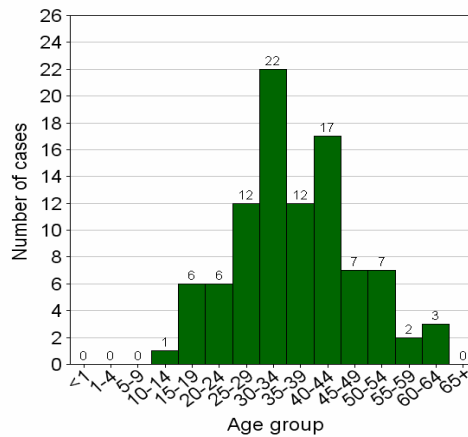


Figure 14.2. Passenger deaths by age (n = 140)

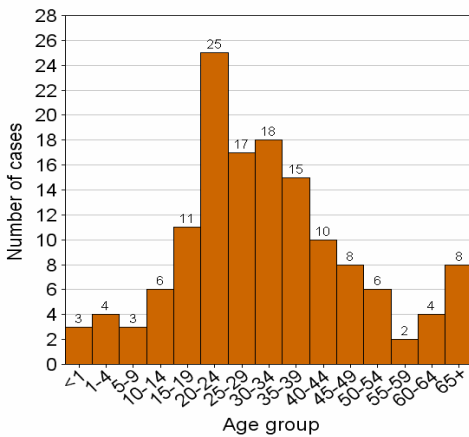
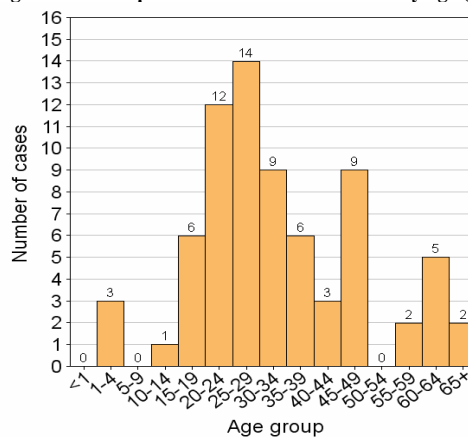


Figure 14.5. Unspecified motor vehicle deaths by age (n = 72)



External cause of other unintentional injury deaths (non-transport) by age

Age was unknown in 12 of the 466 cases. Of the remaining cases, the average age of the deceased was 34 (\pm 19.7 yrs). The leading cause for non-transported related deaths in the:

- 0-14 age group was burns (52.1%);
- 15-24 age group was burns (52.4%);
- 25-34 age group was burns (74.8%);
- 35-44 age group was burns (58.8%);
- 45-54 age group was burns (55.4%);
- 55-64 age group was burns (35.5%); and
- 65+ age group was fall from height (47.1%) followed by burns (32.4%).

Figure 15.1. Burn deaths by age (n = 259)

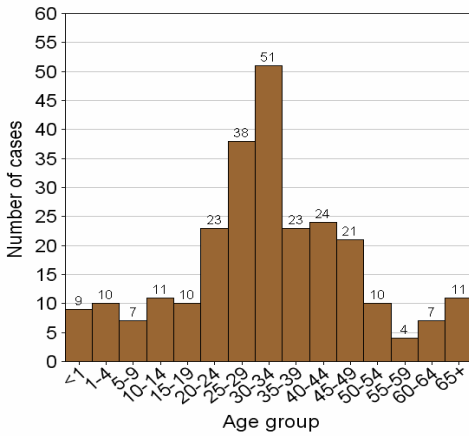


Figure 15.3. Fall from a height deaths by age (n = 51)

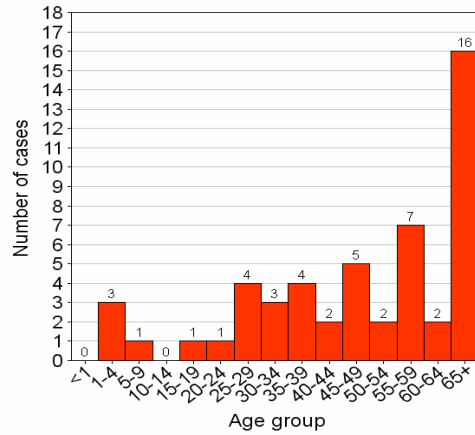


Figure 15.4. Other fall related deaths by age (n = 15)

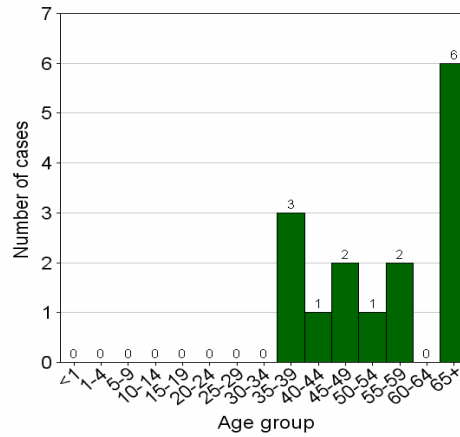


Figure 15.2. Drowning deaths by age (n = 75)

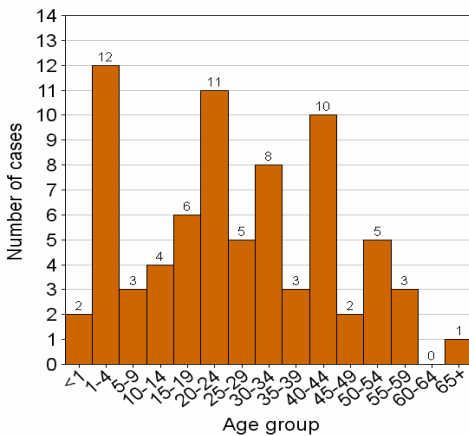
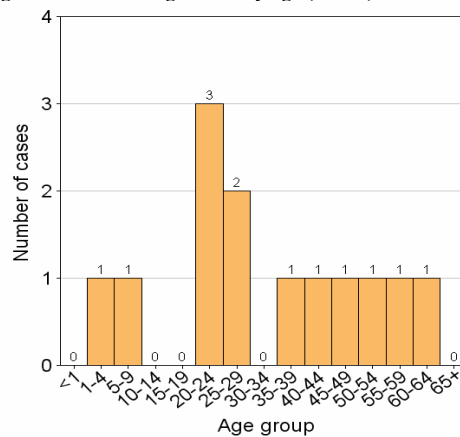


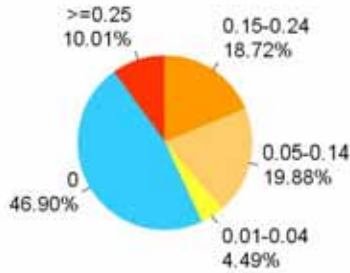
Figure 15.5. Crushing deaths by age (n = 13)



7. Blood alcohol levels

Blood alcohol concentration (BAC) levels were obtained in 2158 of the 4467 cases. The average BAC for those who tested positive was 0.16 ± 0.09 g/100ml.

Figure 16. Blood Alcohol Levels (n = 2158)



Blood alcohol level by apparent manner

Of the 4467 who were fatally injured, blood alcohol concentration were available in 2158 (48.3%).

Table II: Blood alcohol levels per apparent manner

Apparent manner	BAC's done n(%)	BAC positive n(%)	Mean BAC	Std. Dev.
Violence (2046)	1195 (58.41)	725 (60.67)	0.15	0.08
Suicide (354)	223 (62.99)	57 (25.56)	0.13	0.07
Transport (1051)	445 (42.34)	237 (53.26)	0.17	0.1
Other unintentional (466)	177 (37.98)	89 (50.28)	0.18	0.1
Undetermined (550)	118 (21.45)	38 (32.2)	0.2	0.16
Total	2158	1146	0.17	0.1

Blood alcohol level by transport user

Of the 1051 who were fatally injured in transport collisions, blood alcohol concentration were available in 445 (42.3%) of the cases.

Table III: Blood alcohol levels per transport user

Transport user	BAC's done n(%)	BAC positive n(%)	Mean BAC	Std. Dev.
Driver (138)	71 (51.45)	37 (52.11)	0.14	0.07
Passenger (143)	60 (41.96)	25 (41.67)	0.13	0.08
Pedestrian (552)	229 (41.49)	145 (63.32)	0.2	0.1
Railway case (97)	38 (39.18)	13 (34.21)	0.15	0.12
Cyclist (49)	22 (44.9)	8 (36.36)	0.12	0.06
Unspecified (72)	25 (34.72)	9 (36)	0.15	0.07
Total	445	237	0.18	0.1