

### External cause of suicide by age

Age was unknown in 69 of the 286 cases. Of the remaining cases, the average age of the deceased was 37 ( $\pm$  13.6 yrs). The leading external cause of death for suicide in the:

- 0-14 age group was hanging (100%);
- 15-24 age group was hanging (44.7%);
- 25-34 age group was hanging (37.5%) followed by firearms (26.6%);
- 35-44 age group was hanging (43.1%);
- 45-54 age group was firearms (41.7%);
- 55-64 age group was firearms (50%) followed by hanging (31.2%); and
- 65+ age group was firearms (63.6%).

Figure 13.1. Hanging suicide by age (n = 81)

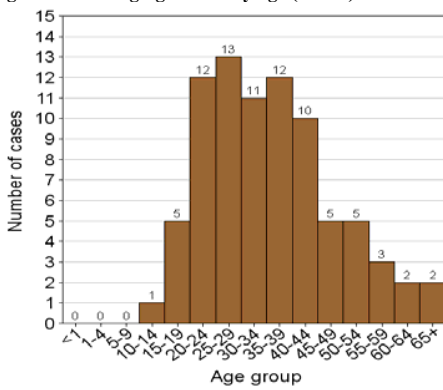


Figure 13.3. Poisoning suicide by age (n = 33)

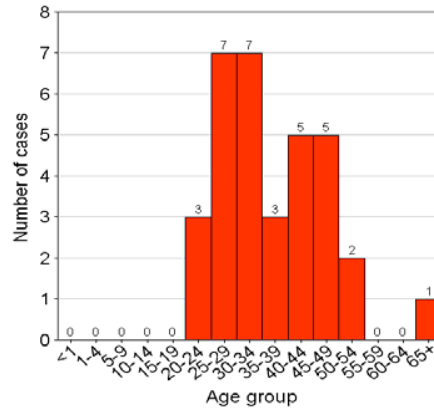


Figure 13.4. Gassing suicide by age (n = 17)

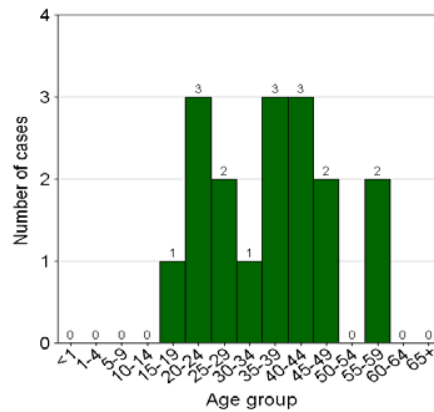


Figure 13.2. Firearm suicide by age (n = 69)

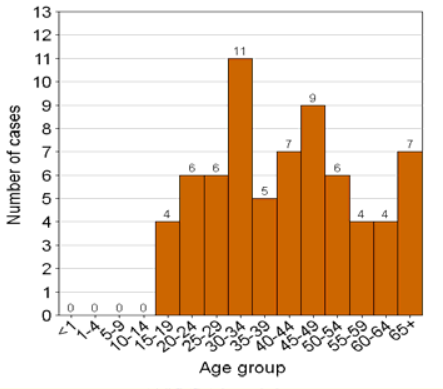
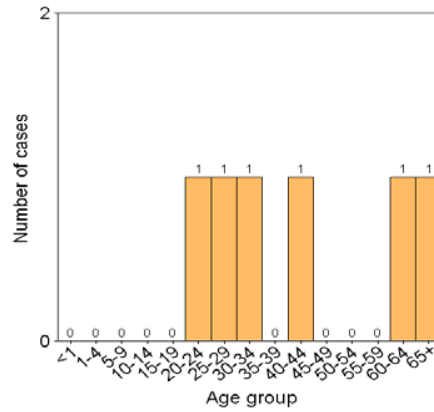


Figure 13.5. Jump from height suicide by age (n = 6)



### External cause of transport-related deaths by age

Age was unknown in 333 of the 780 cases. Of the remaining cases, the average age of the deceased was 35 ( $\pm 16.9$  yrs). The leading external cause of death for transport in the:

- **0-14** age group was pedestrian injuries(44.1%) followed by motor vehicle passenger (32.4%);
- **15-24** age group was motor vehicle driver (21.6%), followed by pedestrian injuries(18.9%);
- **25-34** age group was pedestrian injuries (26%), followed by motor vehicle driver (26%), followed by motor vehicle unspecified (22.9%);
- **35-44** age group was pedestrian injuries(39.1%);
- **45-54** age group was motor vehicle unspecified (30.4%);
- **55-64** age group was pedestrian injuries(33.3%) followed by motor vehicle unspecified (30.3%); and
- **65+** age group was motor vehicle passenger (33.3%).

Figure 14.1. Pedestrian deaths by age (n = 132)

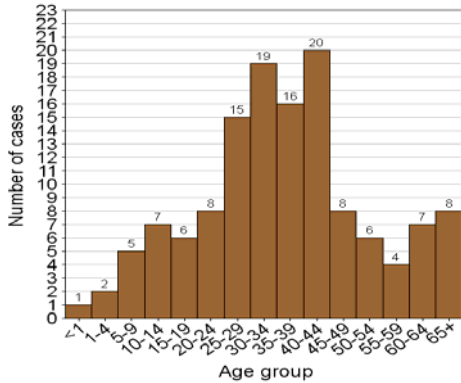


Figure 14.2. Unspecified motor vehicle deaths by age (n = 92)

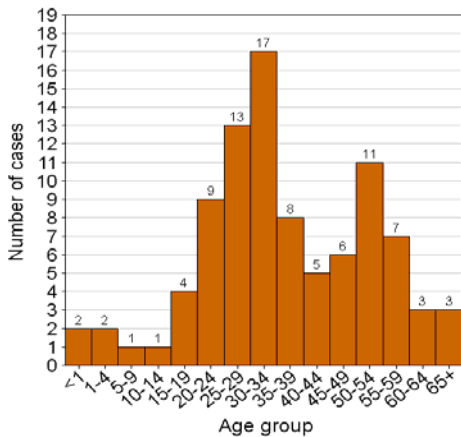


Figure 14.3. Driver deaths by age (n = 90)

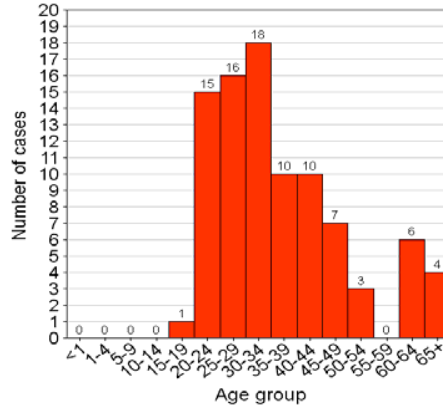


Figure 14.4. Passenger deaths by age (n = 86)

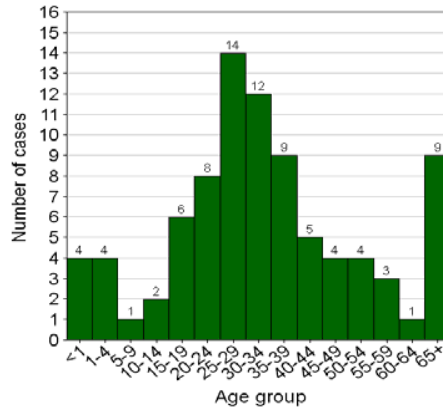
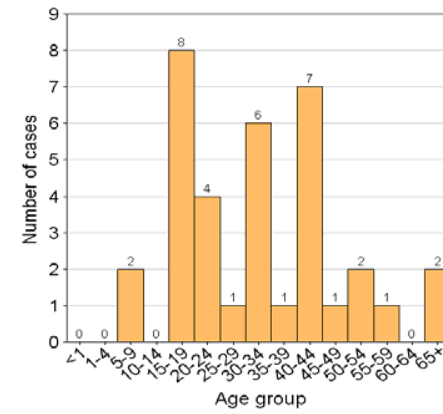


Figure 14.5. Cyclist deaths by age (n = 35)



**External cause of other unintentional injury deaths (non-transport) by age**

Age was unknown in 57 of the 193 cases. Of the remaining cases, the average age of the deceased was 31 ( $\pm 21.3$  yrs). The leading cause for non-transported related deaths in the:

- 0-14 age group was drowning (34.4%);
- 15-24 age group was fall from height (14.3%) followed by poison ingestion (14.3%);
- 25-34 age group was burns (22.2%);
- 35-44 age group was burns (35.7%);
- 45-54 age group was burns (50%);
- 55-64 age group was burns (33.3%); and
- 65+ age group was burns (36.4%).

Figure 15.3. Fall from a height deaths by age (n = 15)

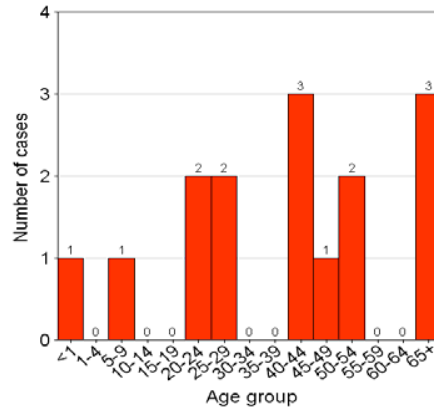


Figure 15.1. Burn deaths by age (n = 38)

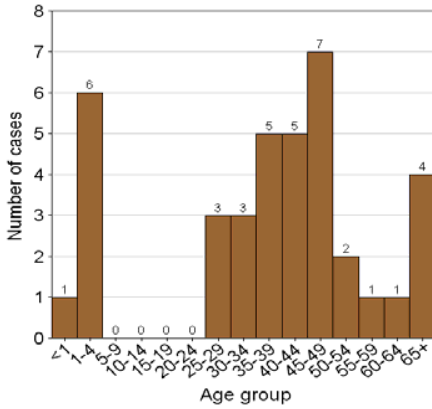


Figure 15.4. Poisoning deaths by age (n = 12)

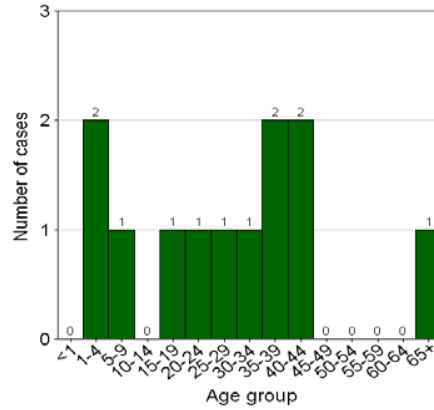
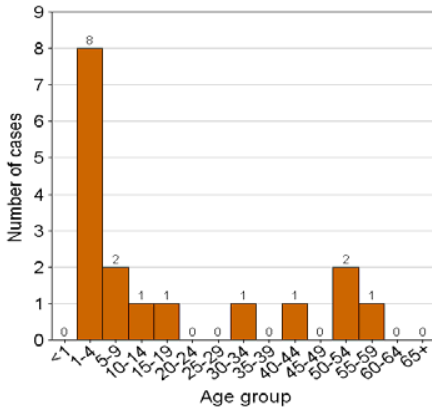


Figure 15.2. Drowning deaths by age (n = 17)



### 7. Blood alcohol levels

Blood alcohol concentration (BAC) levels were obtained in 1175 of the 1998 cases. The average BAC for those who tested positive was  $0.17 \pm 0.12$  g/100ml.

Figure 16. Blood Alcohol Levels (n = 1175)



### Blood alcohol level by apparent manner of death

Of the 1998 who were fatally injured, blood alcohol concentration were available in 1175 (58.8%).

Table II: Blood alcohol levels per apparent manner of death

Apparent manner	BAC's done n(%)	BAC positive n(%)	Mean BAC	Std. Dev.
Violence (464)	284 (61.21)	139 (48.94)	0.17	0.11
Suicide (286)	176 (61.54)	77 (43.75)	0.14	0.1
Transport (780)	505 (64.74)	251 (49.7)	0.19	0.13
Other unintentional (193)	84 (43.52)	30 (35.71)	0.15	0.12
Undetermined (275)	126 (45.82)	47 (37.3)	0.16	0.1
Total	1175	544	0.16	0.11

### Blood alcohol level by transport user

Of the 780 who were fatally injured in transport collisions, blood alcohol concentration were available in 505 (64.7%) of the cases.

Table III: Blood alcohol levels per transport user

Transport user	BAC's done n(%)	BAC positive n(%)	Mean BAC	Std. Dev.
Driver (154)	104 (67.53)	54 (51.92)	0.17	0.09
Passenger (151)	103 (68.21)	37 (35.92)	0.15	0.12
Pedestrian (269)	182 (67.66)	106 (58.24)	0.22	0.16
Railway case (36)	27 (75)	7 (25.93)	0.21	0.12
Cyclist (41)	26 (63.41)	17 (65.38)	0.20	0.11
Unspecified (129)	63 (48.84)	30 (47.62)	0.15	0.1
Total	505	251	0.22	0.14