

External cause of suicide by age

Age was unknown in 4 of the 440 cases. Of the remaining cases, the average age of the victims was 33 (\pm 13.8 yrs). The leading external cause of death for suicide in the:

- 0-14 age group was poisoning (50%) followed by hanging (37.5%);
- 15-24 age group was hanging (64.7%);
- 25-34 age group was hanging (69.8%);
- 35-44 age group was hanging (58.8%);
- 45-54 age group was hanging (56%);
- 55-64 age group was hanging (47.8%) followed by firearms (39.1%); and
- 65+ age group was hanging (41.2%).

Figure 13.1. Hanging suicide by age (n = 270)

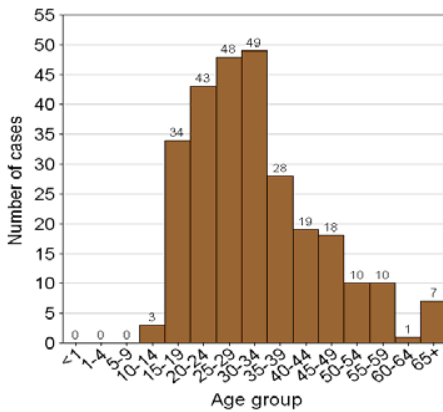


Figure 13.2. Firearm suicide by age (n = 78)

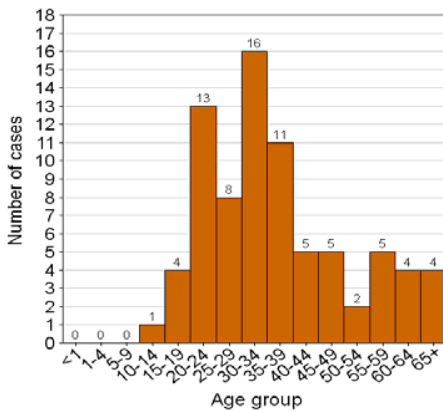


Figure 13.3. Poisoning suicide by age (n = 46)

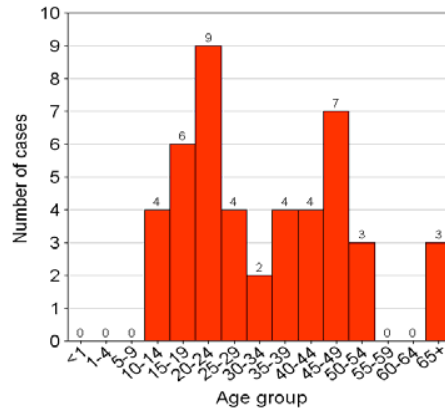


Figure 13.4. Jump from height suicide by age (n = 12)

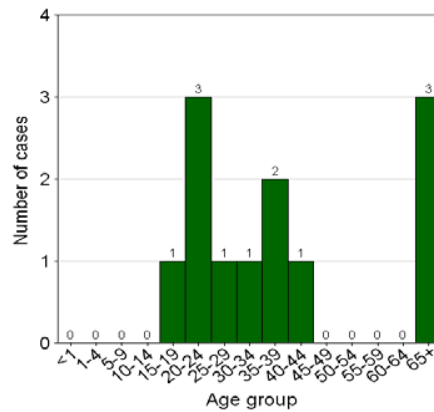
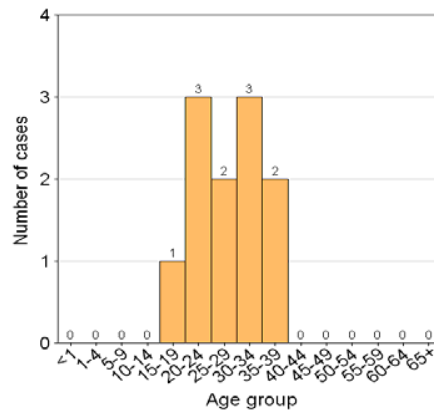


Figure 13.5. Burn suicide by age (n = 11)



External cause of transport-related deaths by age

Age was unknown in 25 of the 1134 cases. Of the remaining cases, the average age of the deceased was 33 (± 15.8 yrs). The leading external cause of death for transport in the:

- 0-14 age group was pedestrian injuries (58.7%);
- 15-24 age group was pedestrian injuries (36.8%) followed by motor vehicle unspecified (31.9%);
- 25-34 age group was pedestrian injuries (43.2%) followed by motor vehicle unspecified (31.5%);
- 35-44 age group was pedestrian injuries (52.7%);
- 45-54 age group was pedestrian injuries (40.2%) followed by motor vehicle unspecified (34.8%);
- 55-64 age group was pedestrian injuries (46.6%); and
- 65+ age group was motor vehicle unspecified (41.5%)

Figure 14.1. Pedestrian deaths by age (n = 502)

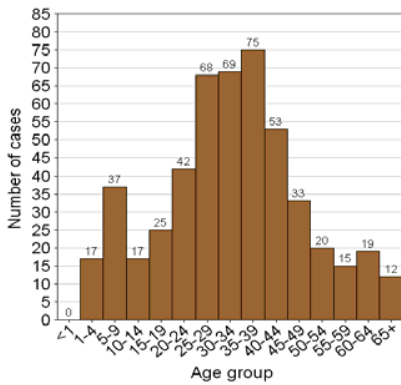


Figure 14.2. Unspecified motor vehicle deaths by age (n = 328)

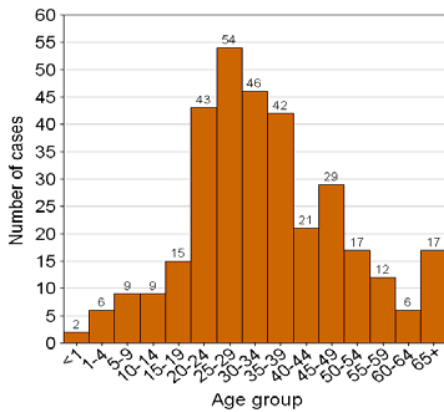


Figure 14.3. Passenger deaths by age (n = 122)

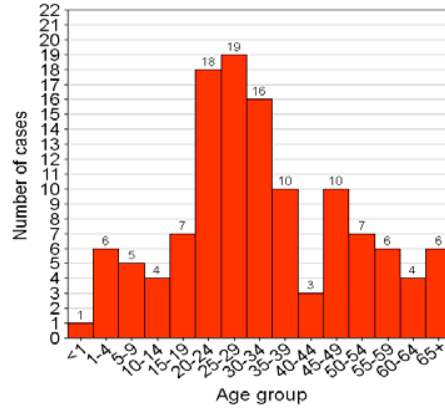


Figure 14.4. Driver deaths by age (n = 85)

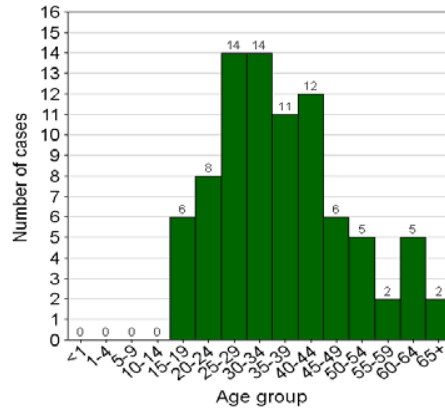
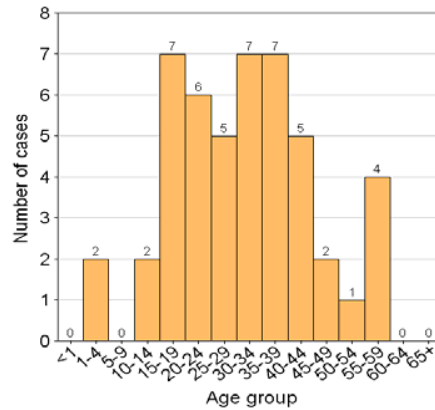


Figure 14.5. Railway deaths by age (n = 48)



External cause of other unintentional injury deaths (non-transport deaths) by age

Age was unknown in 4 of the 218 cases. Of the remaining cases, the average age of the deceased was 31 (± 19.4 yrs). The leading cause for non-transported related deaths in the:

- 0-14 age group was drowning (40.9%)
- 15-24 age group was drowning (20.7%);
- 25-34 age group was drowning (31.2%), followed by burns (25%);
- 35-44 age group was fall/push/jump from height (26.3%), followed by drowning (21.1%);
- 45-54 age group was crushing (22.2%);
- 55-64 age group was drowning (18.8%) and crushing (18.8%); and
- 65+ age group was fall/push/jump from height (50%).

Figure 15.1. Drowning deaths by age (n = 54)

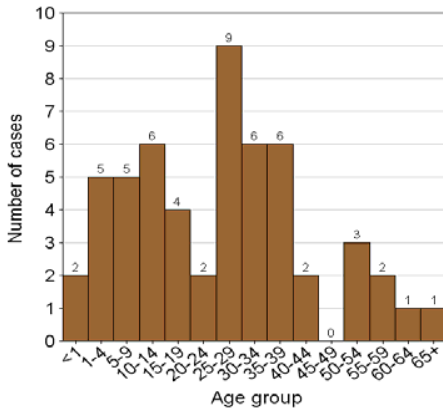


Figure 15.3. Fall from a height deaths by age (n = 24)

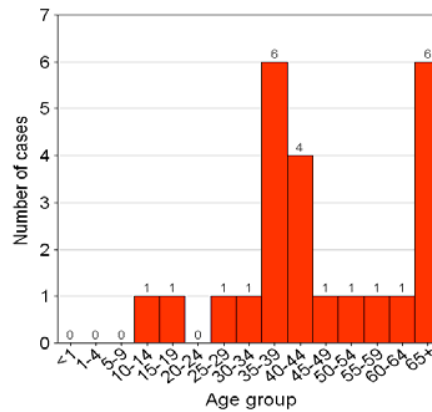


Figure 15.4. Blunt force injury deaths by age (n = 20)

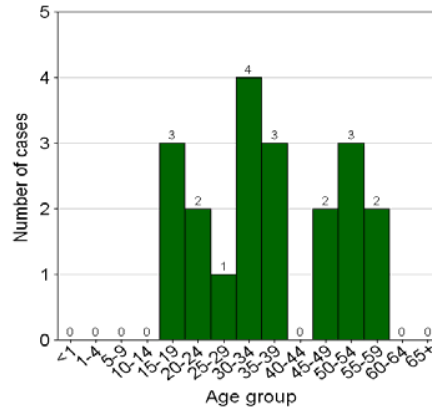


Figure 15.2. Burn deaths by age (n = 40)

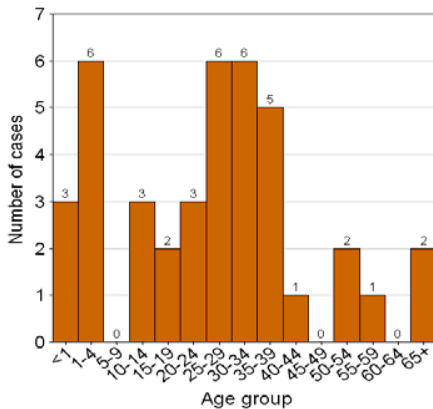
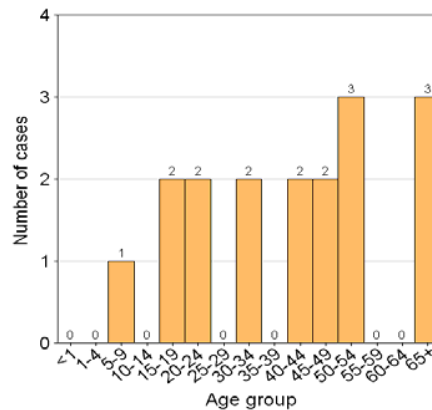


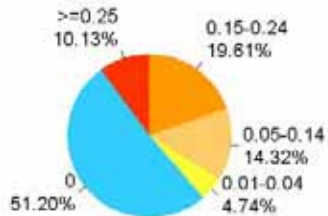
Figure 15.5. Other fall-related deaths by age (n = 17)



7. Blood alcohol levels

Blood alcohol concentration (BAC) levels were obtained in 1836 of the 4083 cases. The average BAC for those who tested positive was 0.17 ± 0.09 g/100ml.

Figure 16. Blood Alcohol Levels (n = 1836)



Blood alcohol level by apparent manner of death

Of the 4083 who were fatally injured, blood alcohol concentration were available in 1836 (45.0%).

Table II: Blood alcohol levels per apparent manner of death

Apparent manner	BAC's done n(%)	BAC positive n(%)	Mean BAC	Std. Dev.
Violence (1874)	1023 (54.59)	515 (50.34)	0.16	0.08
Suicide (440)	143 (32.5)	52 (36.36)	0.12	0.08
Transport (1134)	547 (48.24)	285 (52.1)	0.19	0.09
Other unintentional (218)	64 (29.36)	19 (29.69)	0.18	0.08
Undetermined (417)	59 (14.15)	25 (42.37)	0.18	0.12
Total	1836	896	0.17	0.09

Blood alcohol level by transport user

Of the 1134 who were fatally injured in transport collisions, blood alcohol concentration were available in 547 (48.2%) of the cases.

Table III: Blood alcohol levels per transport user

Transport user	BAC's done n(%)	BAC positive n(%)	Mean BAC	Std. Dev.
Driver (87)	60 (68.97)	24 (40)	0.17	0.07
Passenger (123)	53 (43.09)	17 (32.08)	0.13	0.06
Pedestrian (508)	316 (62.2)	190 (60.13)	0.20	0.09
Railway case (51)	33 (64.71)	13 (39.39)	0.21	0.1
Cyclist (24)	11 (45.83)	4 (36.36)	0.11	0.06
Unspecified (341)	74 (21.7)	37 (50)	0.17	0.09
Total	547	285	0.20	0.09