

### External cause of suicide by age

Age was unknown in 283 of the 2522 cases. Of the remaining cases, the average age of the deceased was 34 ( $\pm 13.6$  yrs). The leading external cause of death for suicide in the:

- 0-14 age group was hanging (53.1%);
- 15-24 age group was hanging (59%);
- 25-34 age group was hanging (52%);
- 35-44 age group was hanging (46.1%);
- 45-54 age group was hanging (38.5%);
- 55-64 age group was firearms (41.7%) followed by hanging (31.5%); and
- 65+ age group was firearms (39.3%).

Figure 13.1. Hanging suicide by age (n = 1088)

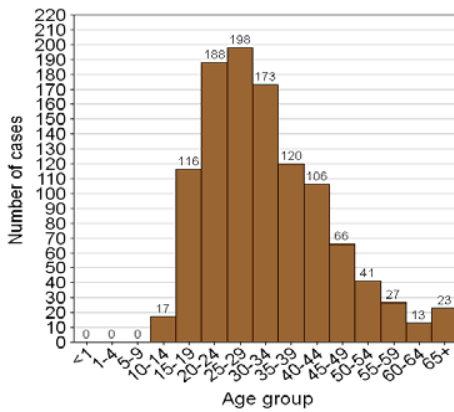


Figure 13.2. Firearm suicide by age (n = 489)

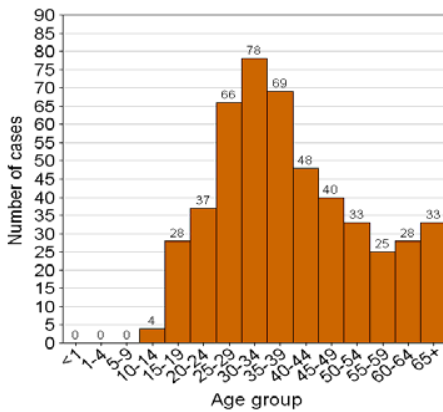


Figure 13.3. Poisoning suicide by age (n = 351)

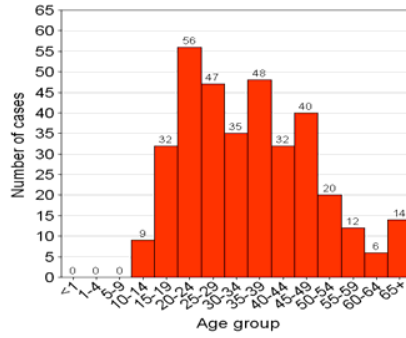


Figure 13.4. Gassing suicide by age (n = 112)

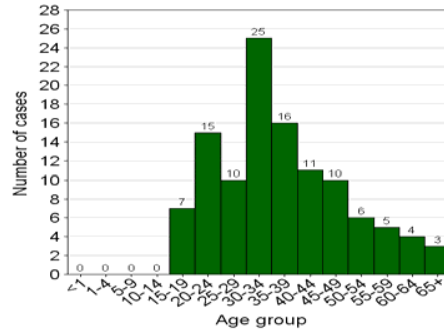
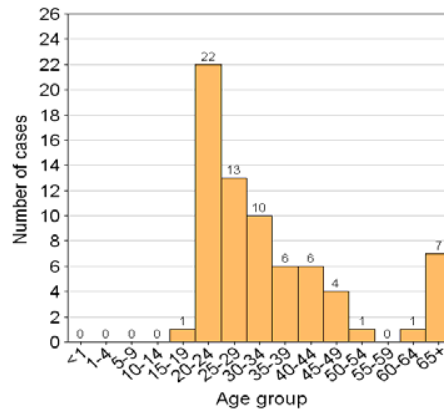


Figure 13.5. Jump from height suicide by age (n = 71)



### External cause of transport deaths by age

Age was unknown in 1108 of the 6783 cases. Of the remaining cases, the average age of the deceased was 34 ( $\pm 16.1$  yrs). The leading external cause of death for transport in the:

- 0-14 age group was pedestrian injuries (61.1%);
- 15-24 age group was pedestrian injuries (32.1%);
- 25-34 age group was pedestrian injuries (35.9%);
- 35-44 age group was pedestrian injuries (42%);
- 45-54 age group was pedestrian injuries (38.5%);
- 55-64 age group was pedestrian injuries (42.4%); and
- 65+ age group was pedestrian injuries (31.9%).

Figure 14.1. Pedestrian deaths by age (n = 2246)

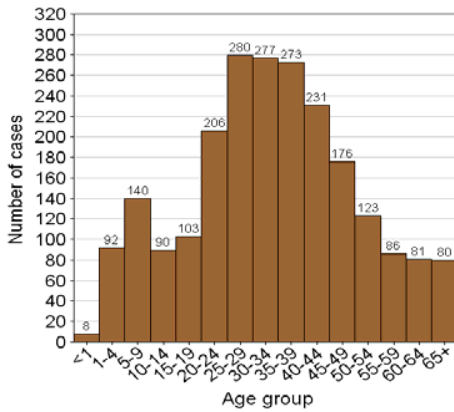


Figure 14.3. Passenger deaths by age (n = 851)

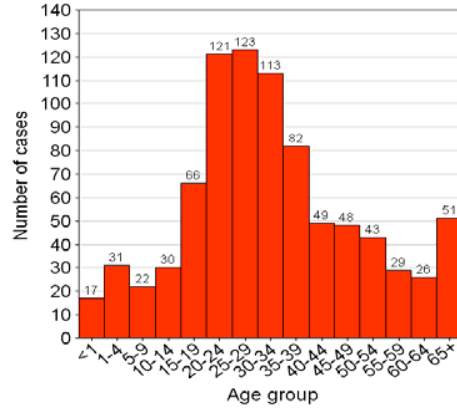


Figure 14.4. Driver deaths by age (n = 800)

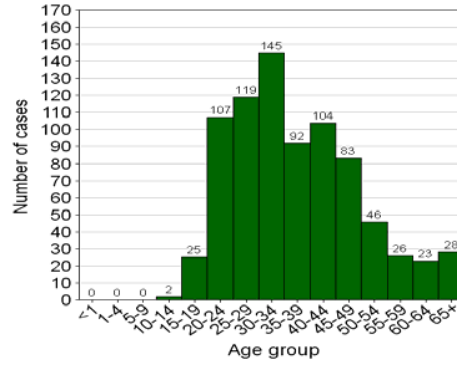


Figure 14.2. Unspecified motor vehicle deaths by age (n = 1294)

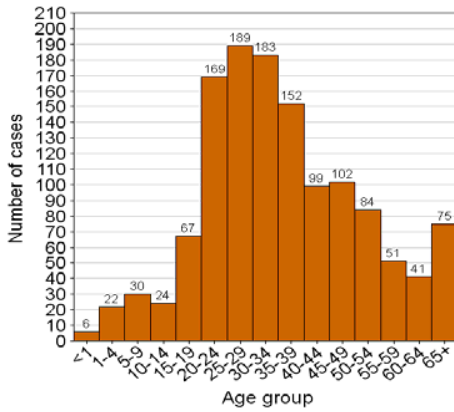
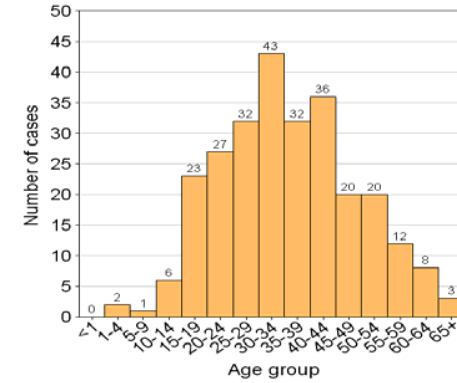


Figure 14.5. Railway deaths by age (n = 265)



**External cause of unintentional injury deaths (non-transport) by age**

Age was unknown in 273 of the 2347 cases. Of the remaining cases, the average age of the deceased was 32 ( $\pm 20.3$  yrs). The leading cause for unintentional injury deaths in the:

- 0-14 age group was drowning (37%) followed by burns (34.1%);
- 15-24 age group was burns (39.2%);
- 25-34 age group was burns (50.7%);
- 35-44 age group was burns (46.5%);
- 45-54 age group was burns (44.9%);
- 55-64 age group was burns (34.1%); and
- 65+ age group was burns (36.5%).

Figure 15.1. Burn deaths by age (n = 879)

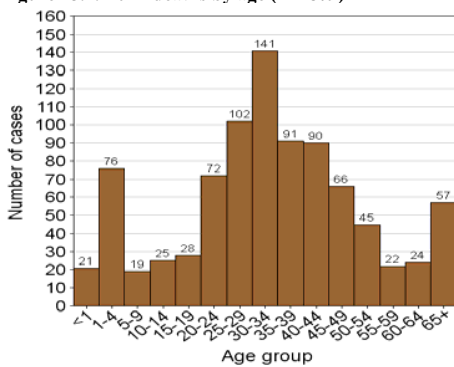


Figure 15.2. Drowning deaths by age (n = 357)

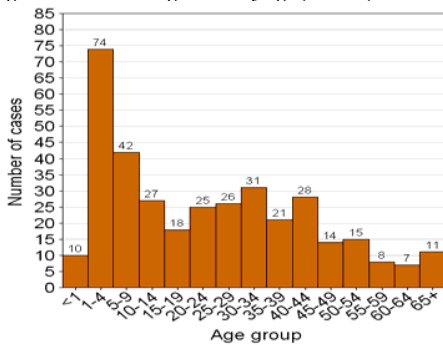


Figure 15.3. Fall from a height deaths by age (n = 196)

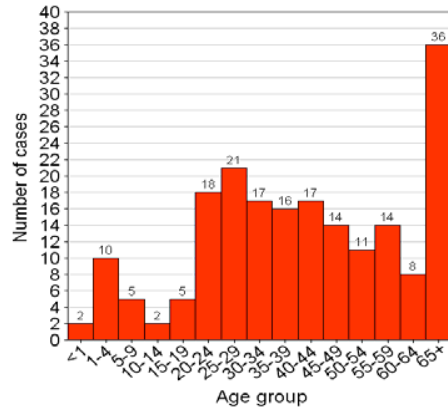
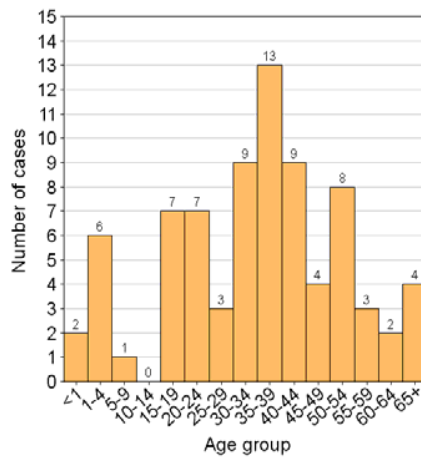


Figure 15.4. Blunt force injury deaths by age (n = 78)



### 7. Blood alcohol levels

Blood alcohol concentration (BAC) levels were obtained in 8988 of the 23541 cases. The average BAC for those who tested positive was  $0.17 \pm 0.10$  g/100ml.

Figure 16. Blood Alcohol Levels (n = 8988)



### Blood alcohol level by apparent manner

Of the 23541 who were fatally injured, blood alcohol concentration were available in 8988 (38.2%).

Table II: Blood alcohol levels per apparent manner

Apparent manner	BAC's done n(%)	BAC positive n(%)	Mean BAC	Std. Dev.
Violence (9126)	4131 (45.27)	2383 (57.69)	0.16	0.09
Suicide (2522)	1034 (41)	385 (37.23)	0.14	0.1
Transport (6783)	2635 (38.85)	1365 (51.8)	0.18	0.11
Other unintentional (2347)	653 (27.82)	301 (46.09)	0.19	0.11
Undetermined (2763)	535 (19.36)	223 (41.68)	0.18	0.12
Total	8988	4657	0.17	0.11

### Blood alcohol level by transport user

Of the 6783 who were fatally injured in transport collisions, blood alcohol concentration were available in 2635 (38.8%) of the cases.

Table III: Blood alcohol levels per transport user

Transport user	BAC's done n(%)	BAC positive n(%)	Mean BAC	Std. Dev.
Driver (951)	482 (50.68)	258 (53.53)	0.16	0.09
Passenger (1020)	365 (35.78)	145 (39.73)	0.15	0.1
Pedestrian (2747)	1195 (43.5)	702 (58.74)	0.2	0.11
Railway case (337)	139 (41.25)	47 (33.81)	0.2	0.11
Cyclist (236)	109 (46.19)	49 (44.95)	0.16	0.1
Unspecified (1480)	343 (23.18)	164 (47.81)	0.16	0.09
Total	2633	1365	0.21	0.12

<b>Appendix 1: Participating mortuaries</b>			
<b>Province</b>	<b>City</b>	<b>Mortuary</b>	<b>Total</b>
Eastern Cape	East London	Woodbrook	1335
Eastern Cape	East London	King Williams Town	333
Eastern Cape	Port Elizabeth	Gelvandale	769
Eastern Cape	Port Elizabeth	Mount Road	824
Eastern Cape	Port Elizabeth	New Brighton	975
Gauteng	Bronkhorstspuit	Bronkhorstspuit	259
Gauteng	Johannesburg	Diepkloof	1721
Gauteng	Johannesburg	Germiston	3260
Gauteng	Johannesburg	Johannesburg	2817
Gauteng	Johannesburg	Roodepoort	1310
Gauteng	Pretoria	Medunsa	672
Gauteng	Pretoria	Pretoria	2246
KwaZulu Natal	Durban	Gale Street	2762
KwaZulu Natal	Durban	Phoenix	2151
KwaZulu Natal	Durban	Pinetown	1113
North West	Klerksdorp	Klerksdorp	481
North West	Potchefstroom	Potchefstroom	410
Northern Cape	Kimberley	Kimberley	449
Western Cape	Cape Town	Salt River	2511
Western Cape	Cape Town	Tygerberg	2701
Western Cape	Stellenbosch	Stellenbosch	497
<b>Total</b>			<b>29596</b>