

High TB burden | High HIV burden | High MDR-TB burden |

Population 2009 (millions) 50

Estimates of burden * 2009	Number (thousands)	Rate (per 100 000 pop)
Mortality (excluding HIV)	26 (14–42)	52 (29–85)
Prevalence (incl HIV)	400 (180–650)	808 (362–1 288)
Incidence (incl HIV)	490 (400–590)	971 (791–1 169)
Incidence (HIV-positive)	280 (230–340)	563 (461–675)
Case detection, all forms (%)	74 (61–91)	

Case notifications 2009

New cases	(%)	Retreatment cases	(%)
Smear-positive	139 468 (41)	Relapse	20 117 (31)
Smear-negative	55 083 (16)	Treatment after failure	2 895 (4)
Smear unknown	92 104 (27)	Treatment after default	5 671 (9)
Extrapulmonary	53 411 (16)	Other	37 233 (56)
Other	0 (0)		
Total new	340 066	Total retreatment	65 916
Total < 15 years	49 825		

Total new and relapse	360 183	(89% of total)
Total cases notified	405 982	

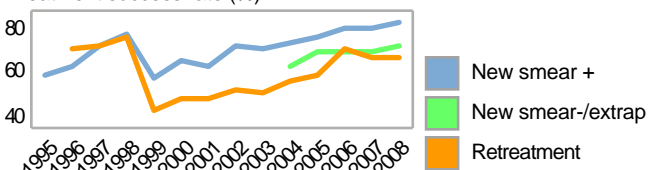
Drug regimens

Rifampicin used throughout treatment	Yes
% of patients treated with fixed-dose combinations (FDCs)	100
Paediatric formulations procured	Yes

Treatment success rate 2008 (%)

New smear-positive	76
New smear-negative/extrapulmonary	68
Retreatment	64

Treatment success rate (%)



MDR-TB, Estimates among notified cases * 2008

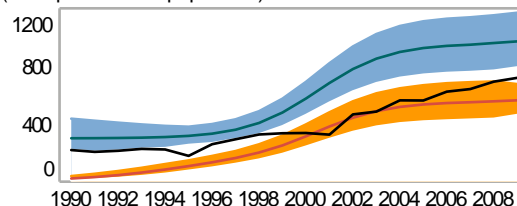
% of new TB cases with MDR-TB	1.8 (1.5–2.3)
% of retreatment TB cases with MDR-TB	6.7 (5.5–8.1)
Estimated MDR-TB cases among new pulmonary TB cases notified in 2009	5 200 (4 300–6 600)
Estimated MDR-TB cases among retreated pulmonary TB cases notified in 2009	4 400 (3 600–5 300)

MDR-TB reported cases 2009	New	Retreat-ment	Total
Cases tested for MDR-TB			
% of notified tested for MDR-TB			
Confirmed cases of MDR-TB			9 070
MDR-TB patients started treatment			4 143

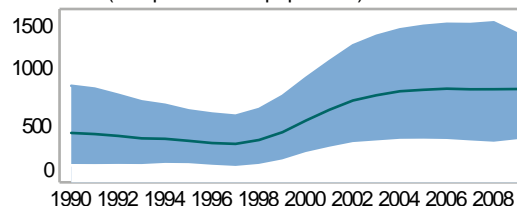
Laboratories	2008	2009	2010
Smear (per 100 000 population)	0.5	0.5	0.5
Culture (per 5 million population)	1.5	1.6	1.5
DST (per 10 million population)	24	32	3

Second-line DST available	In and outside country
National Reference Laboratory	Yes

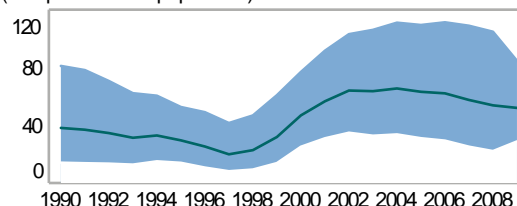
Incidence (HIV+TB in orange), notifications (black) (rates per 100 000 population)



Prevalence (rate per 100 000 population)



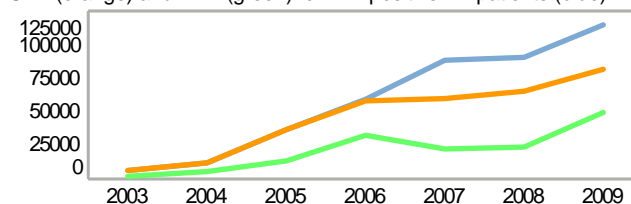
Mortality excluding HIV (rate per 100 000 population)



TB/HIV 2009

TB patients with known HIV status	197 448
% of TB patients with known HIV status	49
TB patients that are HIV-positive	114 523
% of tested TB patients that are HIV-positive	58
% HIV-positive TB patients started on CPT	71
% HIV-positive TB patients started on ART	42
HIV-positive people screened for TB	433 662
HIV-positive people provided with IPT	23 583

CPT (orange) and ART (green) for HIV-positive TB patients (blue)



Financing	2010	2011
Total budget (US\$ millions)	386	218
Available funding (US\$ millions)	386	218
% of budget funded	100	100
% available funding from domestic sources	77	100
% available funding from Global Fund	23	0

NTP Budget (blue) and available funding (green) (US\$ millions)

