



WHO / UNICEF

**Joint Monitoring Programme
for Water Supply and Sanitation**

Estimates for the use of
**Improved
Sanitation Facilities**

Updated March 2010

South Africa

Use of sanitation facilities		OHS94			South Africa			Use of sanitation facilities		OHS95			South Africa		
October Household Surveys					1994			October Household Surveys					1995		
Original denomination	Classification	Urban	Rural	Total	Original denomination	Classification	Urban	Rural	Total						
	Flush and pour flush	84.7	11.7	53.1		Flush and pour flush	86.4	16.2	58.6						
	to piped sewer system					to piped sewer system									
	to septic tank					to septic tank									
	to pit					to pit									
	to unknown place/ not sure/DK					to unknown place/ not sure/DK									
	to elsewhere					to elsewhere									
Flush toilet	Flush/toilets	84.7	11.7	53.1		Flush/toilets	86.4	16.2	58.6						
	to piped sewer system					to piped sewer system									
	to septic tank					to septic tank									
	to pit					to pit									
	to unknown place/ not sure/DK					to unknown place/ not sure/DK									
	to elsewhere					to elsewhere									
	Private flush/toilet				Flush toilet	Private flush/toilet	85.3	15.6	57.7						
	to piped sewer system					to piped sewer system									
	to septic tank					to septic tank									
	to pit					to pit									
	to unknown place/ not sure/DK					to unknown place/ not sure/DK									
	to elsewhere					to elsewhere									
	Public/shared flush/toilet				Flush toilet	Public/shared flush/toilet	1.1	0.6	0.9						
	to piped sewer system					to piped sewer system									
	to septic tank					to septic tank									
	to pit					to pit									
	to unknown place/ not sure/DK					to unknown place/ not sure/DK									
	to elsewhere					to elsewhere									
	Latrines	12.3	67.7	36.3		Latrines	12.2	63.8	32.5						
	Pour flush latrines					Pour flush latrines									
	to piped sewer system					to piped sewer system									
	to septic tank					to septic tank									
	to pit					to pit									
	to unknown place/ not sure/DK					to unknown place/ not sure/DK									
	to elsewhere					to elsewhere									
	Private pour flush latrine					Private pour flush latrine									
	to piped sewer system					to piped sewer system									
	to septic tank					to septic tank									
	to pit					to pit									
	to unknown place/ not sure/DK					to unknown place/ not sure/DK									
	to elsewhere					to elsewhere									
	Public/shared pour flush latrine					Public/shared pour flush latrine									
	to piped sewer system					to piped sewer system									
	to septic tank					to septic tank									
	to pit					to pit									
	to unknown place/ not sure/DK					to unknown place/ not sure/DK									
	to elsewhere					to elsewhere									
	Dry latrines	12.3	67.7	36.3		Dry latrines	12.2	63.8	32.5						
	Improved latrines					Improved latrines	0.1	2.2	0.9						
	Ventilated Improved Pit latrine					Ventilated Improved Pit latrine	0.1	2.2	0.9						
	Pit latrine with slab/covered latrine					Pit latrine with slab/covered latrine									
	Traditional latrine	5.9	66.1	32.0		Traditional latrine	5.0	59.7	26.6						
	Pit latrine without slab/open pit					Pit latrine without slab/open pit									
	Hanging toilet/hanging latrine					Hanging toilet/hanging latrine									
	Bucket latrine	6.4	1.6	4.3		Bucket latrine	7.1	1.6	4.9						
	Other					Other	0.0	0.3	0.1						
	Private Latrines				VIP	Private Latrines	11.0	55.6	28.6						
	Ventilated Improved Pit latrine				VIP	Ventilated Improved Pit latrine									
	Pit latrine with slab/covered latrine				Other Pit Latrine	Pit latrine with slab/covered latrine									
	Traditional latrine				Other Pit Latrine	Traditional latrine	4.6	54.2	24.2						
	Pit latrine without slab/open pit				Other Pit Latrine	Pit latrine without slab/open pit									
	Hanging toilet/hanging latrine				Other Pit Latrine	Hanging toilet/hanging latrine									
	Bucket latrine				Bucket Latrine	Bucket latrine	6.4	1.4	4.4						
	Other				Other	Other									
	Public/shared Latrines				VIP	Public/shared Latrines	1.2	6.2	3.9						
	Ventilated Improved Pit latrine				VIP	Ventilated Improved Pit latrine	0.1	2.2	0.9						
	Pit latrine with slab/covered latrine				Other Pit Latrine	Pit latrine with slab/covered latrine									
	Traditional latrine				Other Pit Latrine	Traditional latrine	0.4	5.5	2.4						
	Pit latrine without slab/open pit				Other Pit Latrine	Pit latrine without slab/open pit									
	Hanging toilet/hanging latrine				Other Pit Latrine	Hanging toilet/hanging latrine									
	Bucket latrine				Bucket Latrine	Bucket latrine	0.7	0.2	0.5						
	Other				Other	Other	0.0	0.3	0.1						
	Composting toilets					Composting toilets									
	Composting toilet (private)					Composting toilet (private)									
	Composting toilet (shared)					Composting toilet (shared)									
	Other improved	2.1	1.5	1.8		Other improved	0.8	1.6	1.1						
	Other	2.1	1.5	1.8	Chemical toilet	Other	0.5	1.3	0.8						
	Other				Chemical toilet	Other (shared)	0.3	0.3	0.3						
	No facility, bush, field	1.0	19.2	8.9	No facility	No facility, bush, field	0.6	18.5	7.7						
	Other unimproved					Other unimproved									
	Other					Other									
	Other					Other									
	DK/missing information					DK/missing information									
	Total	100.1	100.1	100.1		Total	100.0	100.1	99.9						
Calculations					Calculations										
	Pit latrine estimated improved based on WHS03	4.9	57.4			Pit latrine estimated improved based on WHS03	4.1	51.9							
Estimations					Estimations										
	SC, based on WHS03	84.1	11.5			SC, based on WHS03	85.8	15.9							
Access to improved sanitation :		92%	71%		Access to improved sanitation :		91%	72%							
Access to sewerage connections :		84%	12%		Access to sewerage connections :		86%	16%							
Used for the estimates		Yes	Yes		Used for the estimates		Yes	Yes							
Used for the estimates		Yes	Yes		Used for the estimates		Yes	Yes							
Ratios	Shared improved facilities/all improved facilities				Ratios	Shared improved facilities/all improved facilities									
	Improved latrine / All latrines					Improved latrine / All latrines	1%	3%	3%						
	Covered dry latrines / All dry latrines					Covered dry latrines / All dry latrines									
	VIP / All latrines					VIP / All latrines	1%	3%							
	Traditional latrines / All latrines	46%	96%	88%		Traditional latrines / All latrines	41%	94%	82%						
	Improved + traditional latrines / All latrines					Improved + traditional latrines / All latrines	42%	97%	85%						
Sewerage connection among flush/pour flush				Sewerage connection among flush/pour flush											
Sewerage connection among flush				Sewerage connection among flush											
Number of people covered by the survey:					Number of people covered by the survey:										
Number of households covered by the survey:					Number of households covered by the survey:										
Total population:					Total population:										
Comments					Comments										

Use of sanitation facilities		OHS96			South Africa			Use of sanitation facilities		OHS97			South Africa		
October Household Surveys					1996			October Household Surveys					1997		
Original denomination	Classification	Urban	Rural	Total	Original denomination	Classification	Urban	Rural	Total						
	Flush and pour flush	81.9	10.5	53.3		Flush and pour flush	84.5	25.4	61.3						
	to piped sewer system					to piped sewer system									
	to septic tank					to septic tank									
	to pit					to pit									
	to unknown place/ not sure/DK					to unknown place/ not sure/DK									
	to elsewhere					to elsewhere									
	Flush/toilets	81.9	10.5	53.3		Flush/toilets	84.5	25.4	61.3						
	to piped sewer system					to piped sewer system									
	to septic tank					to septic tank									
	to pit					to pit									
	to unknown place/ not sure/DK					to unknown place/ not sure/DK									
	to elsewhere					to elsewhere									
Flush toilet	Private flush/toilet	80.7	10.1	52.4	Flush toilet	Private flush/toilet	83.0	25.1	60.3						
	to piped sewer system					to piped sewer system									
	to septic tank					to septic tank									
	to pit					to pit									
	to unknown place/ not sure/DK					to unknown place/ not sure/DK									
	to elsewhere					to elsewhere									
Flush toilet	Public/shared flush/toilet	1.2	0.4	0.9	Flush toilet	Public/shared flush/toilet	1.5	0.3	1.0						
	to piped sewer system					to piped sewer system									
	to septic tank					to septic tank									
	to pit					to pit									
	to unknown place/ not sure/DK					to unknown place/ not sure/DK									
	to elsewhere					to elsewhere									
	Latrines	14.7	62.8	34.0		Latrines	13.0	54.5	29.4						
	Pour flush latrines					Pour flush latrines									
	to piped sewer system					to piped sewer system									
	to septic tank					to septic tank									
	to pit					to pit									
	to unknown place/ not sure/DK					to unknown place/ not sure/DK									
	to elsewhere					to elsewhere									
	Private pour flush latrine					Private pour flush latrine									
	to piped sewer system					to piped sewer system									
	to septic tank					to septic tank									
	to pit					to pit									
	to unknown place/ not sure/DK					to unknown place/ not sure/DK									
	to elsewhere					to elsewhere									
	Public/shared pour flush latrine					Public/shared pour flush latrine									
	to piped sewer system					to piped sewer system									
	to septic tank					to septic tank									
	to pit					to pit									
	to unknown place/ not sure/DK					to unknown place/ not sure/DK									
	to elsewhere					to elsewhere									
	Dry latrines	14.7	62.8	34.0		Dry latrines	13.0	54.5	29.4						
	Improved latrines					Improved latrines									
	Ventilated Improved Pit latrine					Ventilated Improved Pit latrine									
	Pit latrine with slab/covered latrine					Pit latrine with slab/covered latrine									
	Traditional latrine	8.4	61.7	29.7		Traditional latrine	7.6	53.5	25.7						
	Pit latrine without slab/open pit					Pit latrine without slab/open pit									
	Hanging toilet/hanging latrine					Hanging toilet/hanging latrine									
	Bucket latrine	6.3	1.1	4.3		Bucket latrine	5.4	1.0	3.7						
	Other					Other									
	Private Latrines	12.8	55.0	29.7		Private Latrines	10.8	44.8	24.2						
VIP	Ventilated Improved Pit latrine				VIP	Ventilated Improved Pit latrine									
Other Pit Latrine	Pit latrine with slab/covered latrine	7.2	53.9	25.9	Other Pit Latrine	Pit latrine with slab/covered latrine	6.2	44.1	21.1						
	Traditional latrine					Traditional latrine									
	Pit latrine without slab/open pit					Pit latrine without slab/open pit									
	Hanging toilet/hanging latrine					Hanging toilet/hanging latrine									
Bucket Latrine	Bucket latrine	5.6	1.1	3.8	Bucket Latrine	Bucket latrine	4.6	0.7	3.1						
	Other					Other									
	Public/shared Latrines	1.9	7.8	4.3		Public/shared Latrines	2.2	9.7	5.2						
VIP	Ventilated Improved Pit latrine				VIP	Ventilated Improved Pit latrine									
Other Pit Latrine	Pit latrine with slab/covered latrine	1.2	7.8	3.8	Other Pit Latrine	Pit latrine with slab/covered latrine	1.4	9.4	4.6						
	Traditional latrine					Traditional latrine									
	Pit latrine without slab/open pit					Pit latrine without slab/open pit									
	Hanging toilet/hanging latrine					Hanging toilet/hanging latrine									
Bucket Latrine	Bucket latrine	0.7	0.5	0.5	Bucket Latrine	Bucket latrine	0.8	0.3	0.6						
Other	Other				Other	Other									
	Composting toilets					Composting toilets									
	Composting toilet (private)					Composting toilet (private)									
	Composting toilet (shared)					Composting toilet (shared)									
	Other improved	1.4	1.8	1.7		Other improved	0.8	0.5	0.8						
Chemical toilet	Other	1.2	1.8	1.5	Chemical toilet	Other	0.6	0.5	0.6						
Chemical toilet	Other (shared)	0.2	0.2	0.2	Chemical toilet	Other (shared)	0.2	0.2	0.2						
No facility	No facility, bush, field	2.0	24.5	11.0	No facility	No facility, bush, field	1.6	19.4	8.5						
	Other unimproved					Other unimproved									
	Other					Other									
	Other					Other									
	DK/missing information					DK/missing information									
	Total	100.0	99.6	100.0		Total	99.9	99.8	100.0						
Calculations					Calculations										
	Pit latrine estimated improved based on WHS03	6.9	53.6			Pit latrine estimated improved based on WHS03	6.3	46.5							
Estimations					Estimations										
	SC, based on WHS03	81.3	10.3			SC, based on WHS03	83.9	25.0							
Access to improved sanitation :		90%	66%		Access to improved sanitation :		92%	72%							
Access to sewerage connections :		81%	10%		Access to sewerage connections :		84%	25%							
Used for the estimates		Yes	Yes		Used for the estimates		Yes	Yes							
Used for the estimates		Yes	Yes		Used for the estimates		Yes	Yes							
Ratios	Shared improved facilities/all improved facilities				Ratios	Shared improved facilities/all improved facilities									
	Improved latrine / All latrines					Improved latrine / All latrines									
	Covered dry latrines / All dry latrines					Covered dry latrines / All dry latrines									
	VIP / All latrines					VIP / All latrines									
	Traditional latrines / All latrines	57%	98%	87%		Traditional latrines / All latrines	58%	98%	87%						
	Improved + traditional latrines / All latrines					Improved + traditional latrines / All latrines									
Sewerage connection among flush/pour flush					Sewerage connection among flush/pour flush										
Sewerage connection among flush					Sewerage connection among flush										
Number of people covered by the survey:					Number of people covered by the survey:										
Number of households covered by the survey:					Number of households covered by the survey:										
Total population:					Total population:										
Comments					Comments										

Use of sanitation facilities		OHS98			South Africa			Use of sanitation facilities		DHS98			South Africa		
October Household Surveys					1998			Demographic and Health Survey					1998		
Original denomination	Classification	Urban	Rural	Total	Original denomination	Classification	Urban	Rural	Total						
	Flush and pour flush	81.8	11.4	53.4		Flush and pour flush	79.6	7.6	50.1						
	to piped sewer system					to piped sewer system									
	to septic tank					to septic tank									
	to pit					to pit									
	to unknown place/ not sure/DK					to unknown place/ not sure/DK									
	to elsewhere					to elsewhere									
	Flush/toilets	81.8	11.4	53.4		Flush/toilets	79.6	7.6	50.1						
	to piped sewer system					to piped sewer system									
	to septic tank					to septic tank									
	to pit					to pit									
	to unknown place/ not sure/DK					to unknown place/ not sure/DK									
	to elsewhere					to elsewhere									
Flush toilet	Private flush/toilet	79.7	11.0	52.0	Own flush toilet	Private flush/toilet	73.1	6.9	46.0						
	to piped sewer system					to piped sewer system									
	to septic tank					to septic tank									
	to pit					to pit									
	to unknown place/ not sure/DK					to unknown place/ not sure/DK									
	to elsewhere					to elsewhere									
Flush toilet	Public/shared flush/toilet	2.1	0.4	1.4	Shared Flush toilet	Public/shared flush/toilet	6.5	0.7	4.1						
	to piped sewer system					to piped sewer system									
	to septic tank					to septic tank									
	to pit					to pit									
	to unknown place/ not sure/DK					to unknown place/ not sure/DK									
	to elsewhere					to elsewhere									
	Latrines	15.7	62.4	33.9		Latrines	17.5	65.6	37.2						
	Pour flush latrines					Pour flush latrines									
	to piped sewer system					to piped sewer system									
	to septic tank					to septic tank									
	to pit					to pit									
	to unknown place/ not sure/DK					to unknown place/ not sure/DK									
	to elsewhere					to elsewhere									
	Private pour flush latrine					Private pour flush latrine									
	to piped sewer system					to piped sewer system									
	to septic tank					to septic tank									
	to pit					to pit									
	to unknown place/ not sure/DK					to unknown place/ not sure/DK									
	to elsewhere					to elsewhere									
	Public/shared pour flush latrine					Public/shared pour flush latrine									
	to piped sewer system					to piped sewer system									
	to septic tank					to septic tank									
	to pit					to pit									
	to unknown place/ not sure/DK					to unknown place/ not sure/DK									
	to elsewhere					to elsewhere									
	Dry latrines	15.7	62.4	33.9		Dry latrines	17.5	65.6	37.2						
	Improved latrines					Improved latrines	8.0	3.1	6.0						
	Ventilated Improved Pit latrine				VIP	Ventilated Improved Pit latrine	8.0	3.1	6.0						
	Pit latrine with slab/covered latrine					Pit latrine with slab/covered latrine									
	Traditional latrine	10.3	61.3	30.1	traditional latrine	Traditional latrine	9.5	62.5	31.2						
	Pit latrine without slab/open pit					Pit latrine without slab/open pit									
	Hanging toilet/hanging latrine					Hanging toilet/hanging latrine									
	Bucket latrine	5.4	0.6	3.5		Bucket latrine									
	Other	0.5	0.3	0.3		Other									
	Private Latrines	14.9	58.5	31.9		Private Latrines									
	Ventilated Improved Pit latrine					Ventilated Improved Pit latrine									
	Pit latrine with slab/covered latrine					Pit latrine with slab/covered latrine									
	Traditional latrine	9.5	57.4	28.1		Traditional latrine									
	Pit latrine without slab/open pit					Pit latrine without slab/open pit									
	Hanging toilet/hanging latrine					Hanging toilet/hanging latrine									
	Bucket latrine	5.4	0.6	3.5		Bucket latrine									
	Other	0.5	0.3	0.3		Other									
	Public/shared Latrines	0.8	3.9	2.0		Public/shared Latrines									
	Ventilated Improved Pit latrine					Ventilated Improved Pit latrine									
	Pit latrine with slab/covered latrine					Pit latrine with slab/covered latrine									
	Traditional latrine	0.8	3.9	2.0		Traditional latrine									
	Pit latrine without slab/open pit					Pit latrine without slab/open pit									
	Hanging toilet/hanging latrine					Hanging toilet/hanging latrine									
	Bucket latrine					Bucket latrine									
	Other					Other									
	Composting toilets					Composting toilets									
	Composting toilet (private)					Composting toilet (private)									
	Composting toilet (shared)					Composting toilet (shared)									
	Other improved		0.8	0.4		Other improved									
	Other		0.5	0.2		Other									
	Other (shared)		0.3	0.2		Other									
Chemical toilet	No facility, bush, field	2.1	27.8	12.1	No Facility	No facility, bush, field	2.0	25.6	11.6						
Chemical toilet	Other unimproved					Other unimproved	0.4	0.4	0.4						
	Other				Other	Other	0.4	0.4	0.4						
	Other				Other	Other									
No facility	DK/missing information				Missing	DK/missing information	0.6	0.7	0.7						
	Total	99.6	102.4	99.8		Total	100.1	99.9	100.0						
Calculations					Calculations										
	Pit latrine estimated improved based on WHS03	8.5	53.2			Pit latrine estimated improved based on WHS03	7.8	54.3							
Estimations					Estimations										
	SC, based on WHS03	81.2	11.2			SC, based on WHS03	79.0	7.5							
Access to improved sanitation :		90%	65%		Access to improved sanitation :		95%	65%							
Access to sewerage connections :		81%	11%		Access to sewerage connections :		79%	7%							
Used for the estimates:		Yes	Yes		Used for the estimates:		Yes	Yes							
Used for the estimates:		Yes	Yes		Used for the estimates:		Yes	Yes							
Ratios	Shared improved facilities/all improved facilities				Ratios	Shared improved facilities/all improved facilities									
	Improved latrine / All latrines					Improved latrine / All latrines	46%	5%	16%						
	Covered dry latrines / All dry latrines					Covered dry latrines / All dry latrines									
	VIP / All latrines					VIP / All latrines	46%	5%	84%						
	Traditional latrines / All latrines	66%	98%	89%		Traditional latrines / All latrines	54%	95%	84%						
	Improved + traditional latrines / All latrines					Improved + traditional latrines / All latrines	100%	100%	100%						
Sewerage connection among flush/pour flush				Sewerage connection among flush/pour flush											
Sewerage connection among flush				Sewerage connection among flush											
Number of people covered by the survey:					Number of people covered by the survey:										
Number of households covered by the survey:					Number of households covered by the survey:										
Total population:					Total population:										
Comments					Comments										

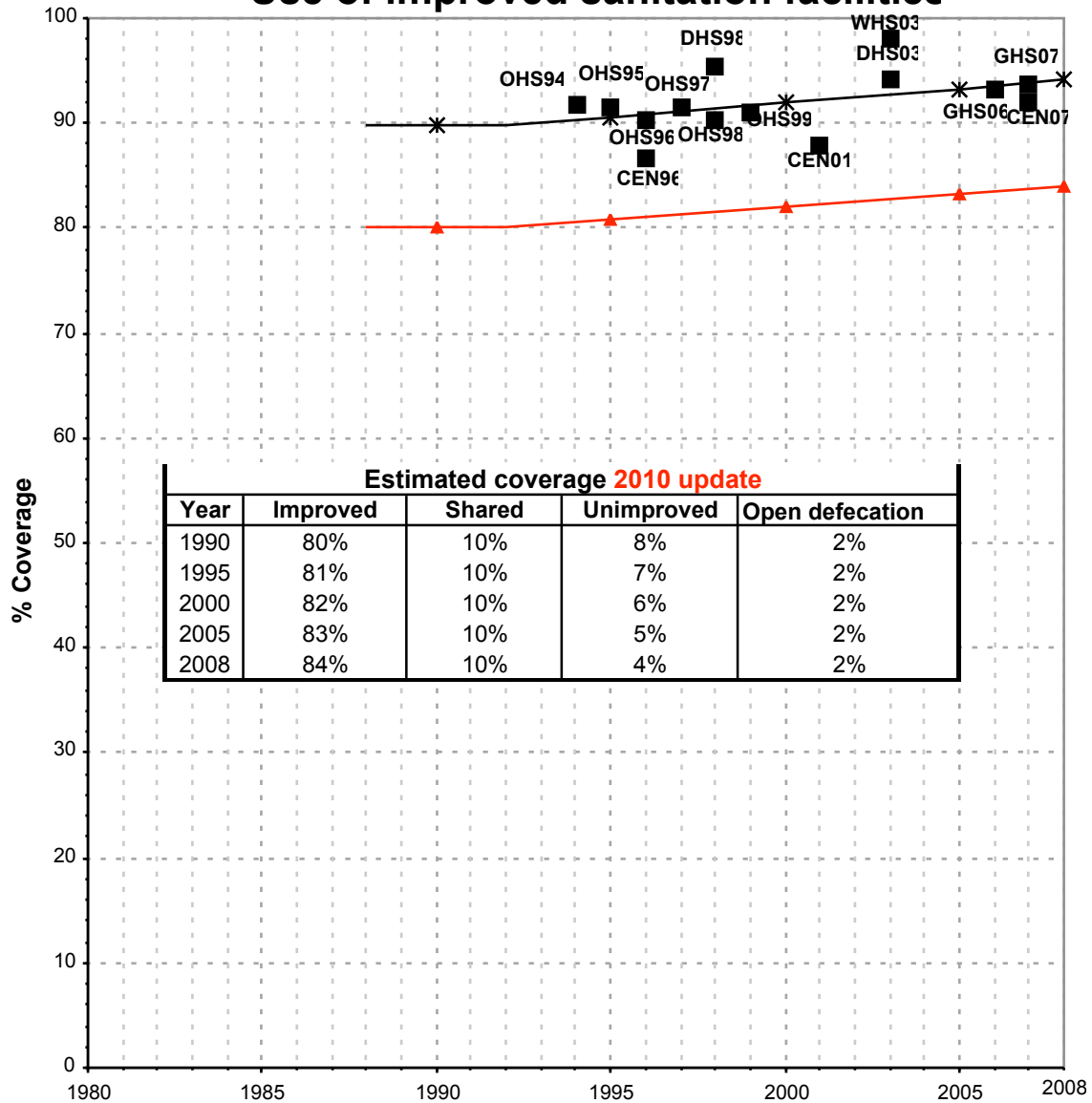
Use of sanitation facilities			CEN96			South Africa			Use of sanitation facilities			CEN07			South Africa								
Recensement général de la population						National Census (10% micro dataset from IPUMS)						Recensement général de la population						National Census (10% micro dataset from IPUMS)					
1996						2007																	
Original denomination	Classification	Urban	Rural	Total	Original denomination	Classification	Urban	Rural	Total														
	Flush and pour flush	76.9	5.6		Flush and pour flush	Flush and pour flush	81.1	9.8															
	to piped sewer system					to piped sewer system	78.1	7.5															
	to septic tank					to septic tank	3.0	2.3															
	to pit					to pit																	
	to unknown place/ not sure/DK					to unknown place/ not sure/DK																	
	to elsewhere					to elsewhere																	
Flush or chemical toilet	Flush/toilets	76.9	5.6		Flush/toilets	Flush/toilets																	
	to piped sewer system					to piped sewer system																	
	to septic tank					to septic tank																	
	to pit					to pit																	
	to unknown place/ not sure/DK					to unknown place/ not sure/DK																	
	to elsewhere					to elsewhere																	
	Private flush/toilet					Private flush/toilet																	
	to piped sewer system					to piped sewer system																	
	to septic tank					to septic tank																	
	to pit					to pit																	
	to unknown place/ not sure/DK					to unknown place/ not sure/DK																	
	to elsewhere					to elsewhere																	
	Public/shared flush/toilet					Public/shared flush/toilet																	
	to piped sewer system					to piped sewer system																	
	to septic tank					to septic tank																	
	to pit					to pit																	
	to unknown place/ not sure/DK					to unknown place/ not sure/DK																	
	to elsewhere					to elsewhere																	
	Latrines		18.1	67.3			Latrines		16.0	67.9													
	Pour flush latrines						Pour flush latrines																
	to piped sewer system					to piped sewer system																	
	to septic tank					to septic tank																	
to pit				to pit																			
to unknown place/ not sure/DK				to unknown place/ not sure/DK																			
to elsewhere				to elsewhere																			
Private pour flush latrine				Private pour flush latrine																			
to piped sewer system				to piped sewer system																			
to septic tank				to septic tank																			
to pit				to pit																			
to unknown place/ not sure/DK				to unknown place/ not sure/DK																			
to elsewhere				to elsewhere																			
Public/shared pour flush latrine				Public/shared pour flush latrine																			
to piped sewer system				to piped sewer system																			
to septic tank				to septic tank																			
to pit				to pit																			
to unknown place/ not sure/DK				to unknown place/ not sure/DK																			
to elsewhere				to elsewhere																			
Dry latrines		18.1	67.3		Dry latrines		16.0	67.9															
Improved latrines					Improved latrines		3.1	14.5															
Ventilated Improved Pit latrine				Pit toilet with ventilation (VIP)	Ventilated Improved Pit latrine	3.1	14.5																
Pit latrine with slab/covered latrine					Pit latrine with slab/covered latrine																		
Pit latrine	10.8	66.1		Pit latrine without ventilation	Traditional latrine	7.0	44.1																
Pit latrine without slab/open pit					Pit latrine without slab/open pit																		
Hanging toilet/hanging latrine					Hanging toilet/hanging latrine																		
Bucket latrine	7.3	1.2		Bucket toilet system	Bucket latrine	3.6	0.7																
Other				Dry toilet facility	Other	2.3	8.6																
Private Latrines					Private Latrines																		
Ventilated Improved Pit latrine					Ventilated Improved Pit latrine																		
Pit latrine with slab/covered latrine					Pit latrine with slab/covered latrine																		
Traditional latrine					Traditional latrine																		
Pit latrine without slab/open pit					Pit latrine without slab/open pit																		
Hanging toilet/hanging latrine					Hanging toilet/hanging latrine																		
Bucket latrine					Bucket latrine																		
Other					Other																		
Public/shared Latrines					Public/shared Latrines																		
Ventilated Improved Pit latrine					Ventilated Improved Pit latrine																		
Pit latrine with slab/covered latrine					Pit latrine with slab/covered latrine																		
Traditional latrine					Traditional latrine																		
Pit latrine without slab/open pit					Pit latrine without slab/open pit																		
Hanging toilet/hanging latrine					Hanging toilet/hanging latrine																		
Bucket latrine					Bucket latrine																		
Other					Other																		
Composting toilets					Composting toilets																		
Composting toilet (private)					Composting toilet (private)																		
Composting toilet (shared)					Composting toilet (shared)																		
Other improved					Other improved		0.3	0.6															
Other				Chemical toilet	Other		0.3	0.6															
Other					Other																		
None of the above	No facility, bush, field	2.9	25.6	None	No facility, bush, field		2.7	21.7															
	Other unimproved				Other unimproved																		
	Other				Other																		
	Other				Other																		
Unknown	DK/missing information	2.1	1.5		DK/missing information																		
	Total	100.0	100.0		Total		100.0	100.0															
Calculations					Calculations																		
	Proportion VIP latrines estimates based on	5.0	3.1			Pit latrine estimated improved based on WHS03	7.6	45.8															
Estimations	Pit latrine estimated improved based on WHS03	4.8	54.7																				
Access to improved sanitation :		87%	63%		Access to improved sanitation :		92%	71%															
Access to sewerage connections :					Access to sewerage connections :		78%	8%															
	Used for the estimates	Yes	Yes			Used for the estimates	Yes	Yes															
	Used for the estimates	Yes	Yes			Used for the estimates	Yes	Yes															
Ratios	Shared improved facilities/all improved facilities				Ratios	Shared improved facilities/all improved facilities																	
	Improved latrine / All latrines					Improved latrine / All latrines	19%	21%															
	Covered dry latrines / All dry latrines					VIP / All latrines	19%	21%															
	VIP / All latrines					Traditional latrines / All latrines	44%	65%															
	Traditional latrines / All latrines	60%	98%			Improved + traditional latrines / All latrines	63%	86%															
	Improved + traditional latrines / All latrines					Sewerage connection among flush/pour flush	96.3	76.8															
	Sewerage connection among flush/pour flush					Sewerage connection among flush																	
	Sewerage connection among flush																						
	Number of people covered by the survey					Number of people covered by the survey																	
	Number of households covered by the survey					Number of households covered by the survey																	
	Total population					Total population																	
Comments					Comments	Urban is an aggregation of urban formal and urban informal Rural is an aggregation of rural formal and tribal area																	

Use of sanitation facilities		GHS06		
General Household Survey				
Source: Statistics South Africa		2006		
Original denomination	Classification	Urban	Rural	Total
	Flush and pour flush	82.6	6.4	
	to piped sewer system	72.5	4.3	
	to septic tank	10.1	2.1	
	to pit			
	to unknown place/ not sure/DK			
	to elsewhere			
	Flush/toilets	82.6	6.4	
	to piped sewer system	72.5	4.3	
	to septic tank	10.1	2.1	
	to pit			
	to unknown place/ not sure/DK			
	to elsewhere			
	Private flush/toilet	81.3	6.2	
Flush toilet with off site disposal - in dwelling or on-site	to piped sewer system	71.3	4.1	
Flush toilet with on site disposal (septic tank) in dwelling or on site	to septic tank	10.0	2.1	
	to pit			
	to unknown place/ not sure/DK			
	to elsewhere			
	Public/shared flush/toilet	1.3	0.2	
Flush toilet with off site disposal - off-site	to piped sewer system	1.2	0.2	
Flush toilet with on site disposal (septic tank) Off site	to septic tank	0.1	0.0	
	to pit			
	to unknown place/ not sure/DK			
	to elsewhere			
	Latrines	15.0	77.1	
	Pour flush latrines			
	to piped sewer system			
	to septic tank			
	to pit			
	to unknown place/ not sure/DK			
	to elsewhere			
	Private pour flush latrine			
	to piped sewer system			
	to septic tank			
	to pit			
	to unknown place/ not sure/DK			
	to elsewhere			
	Public/shared pour flush latrine			
	to piped sewer system			
	to septic tank			
	to pit			
	to unknown place/ not sure/DK			
	to elsewhere			
	Dry latrines	15.0	77.1	
	Improved latrines	3.5	17.6	
	Ventilated Improved Pit latrine	3.5	17.6	
	Pit latrine with slab/covered latrine			
	Traditional latrine	8.0	58.7	
	Pit latrine without slab/open pit			
	Hanging toilet/hanging latrine			
	Bucket latrine	3.5	0.8	
	Other			
	Private Latrines	14.1	74.3	
Pit latrine with ventilation pipe - on site	Ventilated Improved Pit latrine	3.3	17.3	
Pit latrine with ventilation pipe - on site	Pit latrine with slab/covered latrine			
Pit latrine without ventilation pipe - on site	Traditional latrine	7.6	56.5	
Pit latrine without ventilation pipe - on site	Pit latrine without slab/open pit			
Pit latrine without ventilation pipe - on site	Hanging toilet/hanging latrine			
Bucket toilet - on site	Bucket latrine	3.2	0.5	
Bucket toilet - on site	Other			
	Public/shared Latrines	0.9	2.8	
Pit latrine with ventilation pipe - off site	Ventilated Improved Pit latrine	0.2	0.3	
Pit latrine with ventilation pipe - off site	Pit latrine with slab/covered latrine			
Pit latrine without ventilation pipe - off site	Traditional latrine	0.4	2.2	
Pit latrine without ventilation pipe - off site	Pit latrine without slab/open pit			
Pit latrine without ventilation pipe - off site	Hanging toilet/hanging latrine			
Bucket toilet - off site	Bucket latrine	0.3	0.3	
Bucket toilet - off site	Other			
	Composting toilets			
	Composting toilet (private)			
	Composting toilet (shared)			
	Other improved	0.5	0.5	
Chemical toilet on-site	Other	0.4	0.4	
Chemical toilet off-site	Other (shared)	0.1	0.1	
None - off site	No facility, bush, field	1.8	15.9	
	Other unimproved			
	Other			
	Other			
Unspecified	DK/missing information	0.1	0.2	
	Total	100.0	100.1	
Calculations				
Estimations	Pit latrine estimated improved based on WHS03	6.6	51.0	
Access to improved sanitation :		93%	75%	
Access to sewerage connections :		73%	4%	
	Used for the estimates	Yes	Yes	
	Used for the estimates	Yes	Yes	
Ratios	Shared improved facilities/all improved facilities	2.1%	3.3%	
	Improved latrine / All latrines	23%	23%	
	Covered dry latrines / All dry latrines			
	VIP / All latrines	23%	23%	
	Traditional latrines / All latrines	53%	76%	
	Improved + traditional latrines / All latrines	77%	99%	
	Sewerage connection among flush/pour flush	87.8	67.2	
	Sewerage connection among flush	87.8	67.2	
Number of people covered by the survey:				
Number of households covered by the survey:				
Total population:				
Comments				

Use of sanitation facilities		GHS07		South Africa		
General Household Survey				2007		
Source: Statistics South Africa						
Original denomination	Classification	Urban	Rural	Total		
	Flush and pour flush	82.5	7.6			
	to piped sewer system	78.2	5.1			
	to septic tank	4.3	2.5			
	to pit					
	to unknown place/ not sure/DK					
	to elsewhere					
	Flush/toilets	82.5	7.6			
	to piped sewer system	78.2	5.1			
	to septic tank	4.3	2.5			
	to pit					
	to unknown place/ not sure/DK					
	to elsewhere					
	Private flush/toilet	81.3	7.5			
Flush toilet with off site disposal - in dwelling or on-site	to piped sewer system	77.2	5.0			
Flush toilet with on site disposal (septic tank) in dwelling or on site	to septic tank	4.1	2.5			
	to pit					
	to unknown place/ not sure/DK					
	to elsewhere					
	Public/shared flush/toilet	1.2	0.1			
Flush toilet with off site disposal - off-site	to piped sewer system	1.0	0.1			
Flush toilet with on site disposal (septic tank) Off site	to septic tank	0.2	0.0			
	to pit					
	to unknown place/ not sure/DK					
	to elsewhere					
	Latrines	14.8	75.2			
	Pour flush latrines					
	to piped sewer system					
	to septic tank					
	to pit					
	to unknown place/ not sure/DK					
	to elsewhere					
	Private pour flush latrine					
	to piped sewer system					
	to septic tank					
	to pit					
	to unknown place/ not sure/DK					
	to elsewhere					
	Public/shared pour flush latrine					
	to piped sewer system					
	to septic tank					
	to pit					
	to unknown place/ not sure/DK					
	to elsewhere					
	Dry latrines	14.8	75.2			
	Improved latrines	3.7	22.8			
	Ventilated Improved Pit latrine	3.7	22.8			
	Pit latrine with slab/covered latrine					
	Traditional latrine	8.5	51.4			
	Pit latrine without slab/open pit					
	Hanging toilet/hanging latrine					
	Bucket latrine	2.6	1.0			
	Other					
	Private Latrines	13.8	71.3			
Pit latrine with ventilation pipe - on site	Ventilated Improved Pit latrine	3.5	21.6			
Pit latrine without ventilation pipe - on site	Pit latrine with slab/covered latrine					
	Traditional latrine	8.0	48.9			
	Pit latrine without slab/open pit					
	Hanging toilet/hanging latrine					
Bucket toilet - on site	Bucket latrine	2.3	0.8			
	Other					
	Public/shared Latrines	1.0	3.9			
Pit latrine with ventilation pipe - off site	Ventilated Improved Pit latrine	0.2	1.2			
Pit latrine without ventilation pipe - off site	Pit latrine with slab/covered latrine					
	Traditional latrine	0.5	2.5			
	Pit latrine without slab/open pit					
	Hanging toilet/hanging latrine					
Bucket toilet - off site	Bucket latrine	0.3	0.2			
	Other					
	Composting toilets					
	Composting toilet (private)					
	Composting toilet (shared)					
	Other improved	0.5	1.0			
Chemical toilet on-site	Other	0.4	0.8			
Chemical toilet off-site	Other (shared)	0.1	0.2			
None - off site	No facility, bush, field	1.4	15.6			
	Other unimproved					
	Other					
	Other					
Unspecified	DK/missing information	0.8	0.6			
	Total	100.0	100.0			
Calculations						
Estimations	Pit latrine estimated improved based on WHS03	7.0	44.8			
Access to improved sanitation :		94%	76%			
Access to sewerage connections :		78%	5%			
	Used for the estimates	Yes	Yes			
	Used for the estimates	Yes	Yes			
Ratios	Shared improved facilities/all improved facilities	2.0%	4.8%			
	Improved latrine / All latrines	25%	30%			
	Covered dry latrines / All dry latrines					
	VIP / All latrines	25%	30%			
	Traditional latrines / All latrines	57%	68%			
	Improved + traditional latrines / All latrines	82%	99%			
	Sewerage connection among flush/pour flush	94.8	67.1			
	Sewerage connection among flush	94.8	67.1			
	Number of people covered by the survey:					
	Number of households covered by the survey:					
	Total population:					
Comments						

South Africa			SANITATION															
			URBAN								RURAL							
			Sewer connection		Total		Open defecation		Shared		Sewer connection		Total		Open defecation		Shared	
Source	Code	Year	Used	Not used	Used	Not used	Used	Not used	Used	Not used	Used	Not used	Used	Not used	Used	Not used	Used	Not used
October Household Surveys	OHS94	1994	84.1		91.7		1.0				11.5		70.6		19.2			
October Household Surveys	OHS95	1995	85.8		91.4		0.6				15.9		71.9		18.5			
October Household Surveys	OHS96	1996	81.3		90.2		2.0				10.3		65.9		24.5			
October Household Surveys	OHS97	1997	83.9		91.6		1.6				25.0		72.4		19.4			
October Household Surveys	OHS98	1998	81.2		90.3		2.1				11.2		65.4		27.8			
Demographic and Health Survey	DHS98	1998	79.0		95.4		2.0				7.5		65.0		25.6			
October Household Surveys	OHS99	1999	81.1		91.0		1.9				14.3		68.7		20.8			
Census	CEN01	2001		75.4		88.6		4.2				6.7		64.8		27.7		
Census	CEN01	2001	74.4		87.8		5.1				7.1		64.9		27.7			
World Health Survey	WHS03	2003	92.9		98.1		0.3		28.1		30.6		74.1		13.0		28.2	
Recensement général de la population	CEN96	1996			86.6		2.9						63.4		25.6			
Recensement général de la population	CEN07	2007	78.1		92.1		2.7				7.5		70.7		21.7			
General Household Survey	GHS06	2006	72.5		93.2		1.8		2.1		4.3		75.5		15.9		3.3	
General Household Survey	GHS07	2007	78.2		93.7		1.4		2.0		5.1		76.0		15.6		4.8	
Demographic and Health Survey	DHS03	2003	74.8		94.1		2.3				5.5		71.6		18.5			

South Africa - urban - Use of improved sanitation facilities



Improved plus shared

Improved

■ Used for the estimates

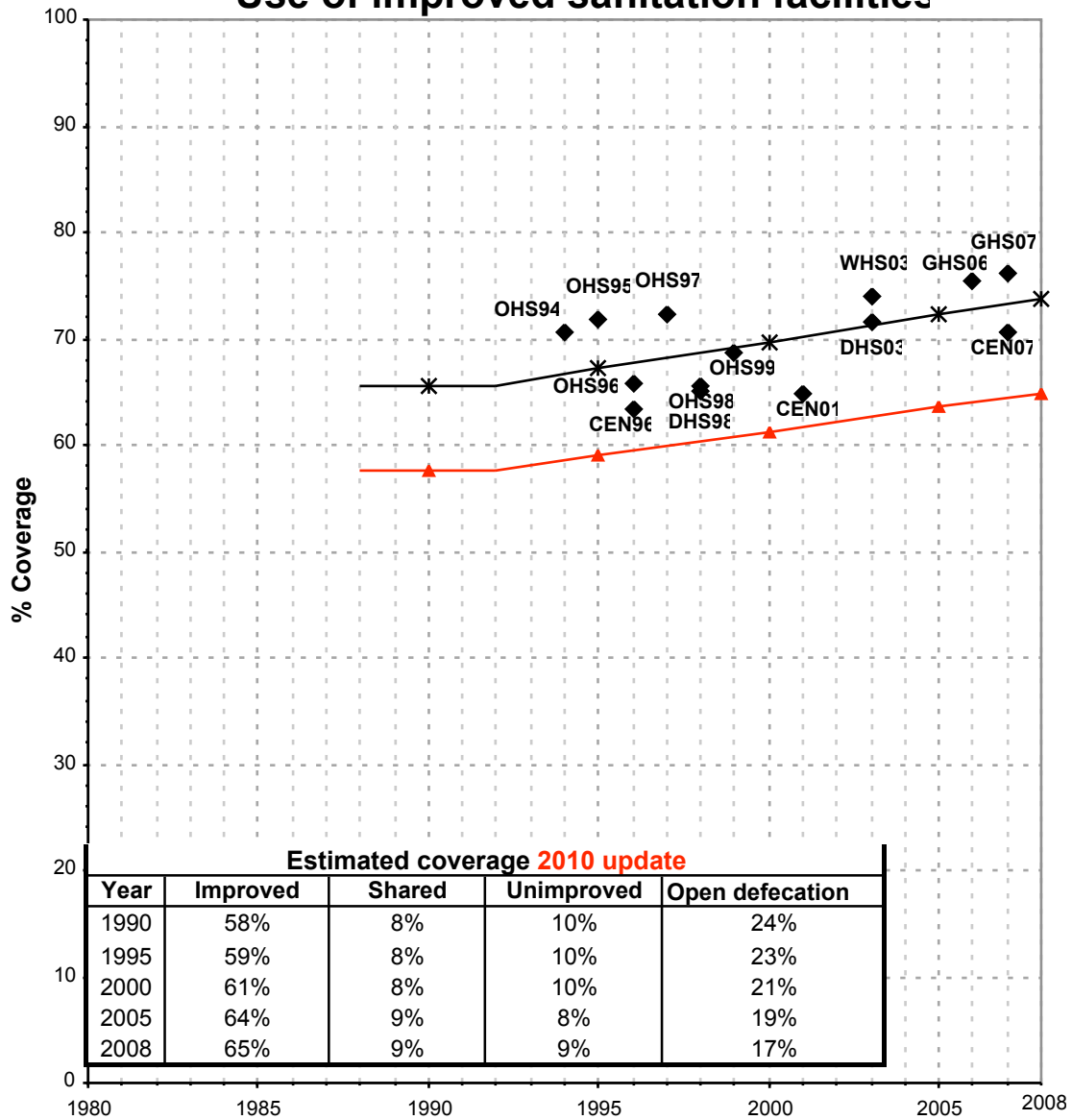
—*— Estimates

—▲— JMP 2010 estimate

Shared facilities :

The proportion of the population using a shared improved sanitation facility is based on the WHS03

South Africa - rural - Use of improved sanitation facilities



Improved plus shared
Improved

◆ Used for the estimates
✱ Estimates
▲ JMP 2010 estimate

Shared facilities :

The proportion of the population using a shared improved sanitation facility is based on the WHS03