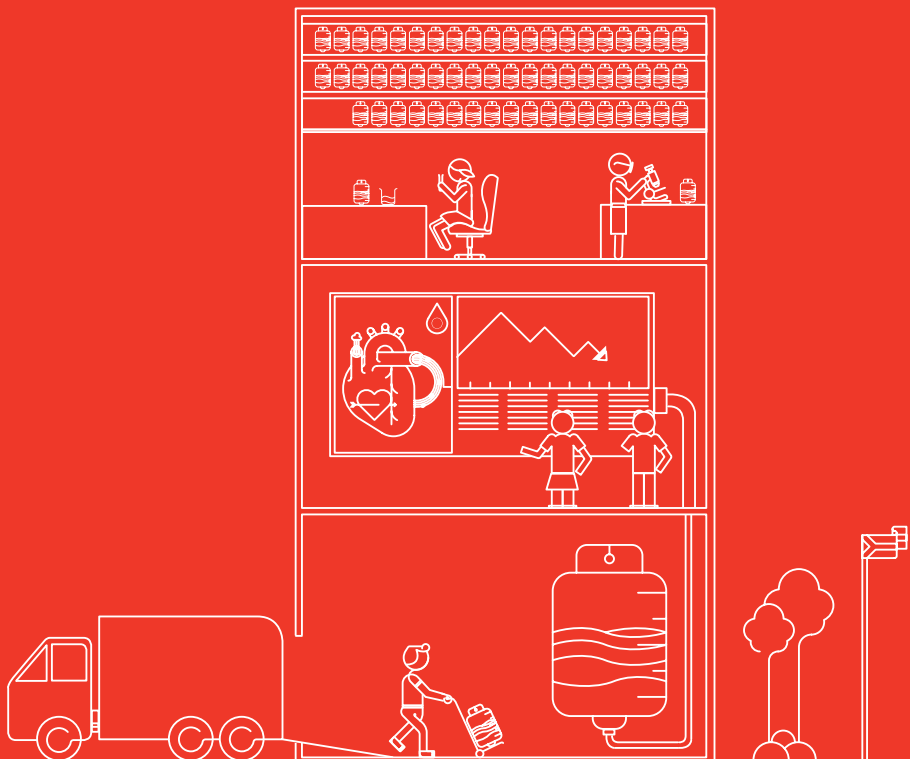




STATE PATIENTS PRICELIST

Valid 1 April 2017 - 31 March 2018



2017 DIAGNOSTIC STATE PRICES

BHF Codes	Description	Price Excl. VAT 2017	Price Incl. VAT 2017
10580	Packaging	R 72,25	R 82,37
15016	Low Ionic Reagent 15ml	R 162,04	R 184,73
78004	Whole Blood Reagent	R 671,88	R 765,94
78012	Buffy Coats	R 335,92	R 382,95
78015	Anti-Human Globulin Polyspecific 15ml	R 285,58	R 325,56
78018	Group A1 15ml	R 168,74	R 192,37
78019	Group A2 15ml	R 168,74	R 192,37
78020	Group B 15ml	R 168,74	R 192,37
78450	Anti-A Monoclonal 5ml	R 78,90	R 89,95
78452	Anti-B Monoclonal 5ml	R 78,90	R 89,95
78454	Anti-A,B Monoclonal 5ml	R 78,90	R 89,95
78461	Anti-D Saline Tube & Slide Monoclonal 5ml	R 125,78	R 143,39
78467	Anti-D IgM+IgG Blend Monoclonal 5ml	R 131,82	R 150,28
78471	Anti-Human Globulin Polyspecific 5ml	R 106,56	R 121,48
78478	AB Serum 5ml	R 79,77	R 90,94
78479	Human Complement 2ml	R 68,86	R 78,50
78482	Lyoph. Bromelin Tube & Microwell 5ml	R 64,85	R 73,92
78484	Antibody Positive Control Serum 5ml	R 69,47	R 79,19
78487	AB Serum 20ml	R 284,88	R 324,76
78488	Group A1 5ml	R 65,71	R 74,90
78490	Group A2 5ml	R 65,71	R 74,90
78492	Group B 5ml	R 65,71	R 74,90
78494	Group O (R1 R2) 5ml	R 71,98	R 82,05
78496	Group O r 5ml	R 71,98	R 82,05
78502	Sensitised Cells 5ml	R 88,14	R 100,48
78508	Screen Cell Set (1 & 2) - 2 X 5ml	R 173,55	R 197,84
78510	Pooled Screen Cells - 5ml	R 87,03	R 99,21
78516	Panel Cell Set 9 x 2ml	R 458,84	R 523,08
78517	Panel Cell Set 9 x 1ml	R 229,31	R 261,41
78518	Panel Cell Set 9 x 5ml	R 1160,69	R 1 323,19
78519	Group O Rh Positive (R1 R2) 15ml	R 187,59	R 213,85
78521	Group O r 15ml	R 187,59	R 213,85
78522	Group O Screen 1 Cells 15ml	R 237,69	R 270,97
78523	Group O Screen 2 Cells 15ml	R 237,69	R 270,97
78524	Panel Cell Set 9 x 15ml	R 1647,41	R 1 878,05
78525	Sensitised Cells 15ml	R 36,20	R 269,27
78529	Anti-A Monoclonal 15ml	R 211,93	R 241,60
78530	Anti-B Monoclonal 15ml	R 211,93	R 241,60
78531	Anti A,B Monoclonal 15ml	R 212,46	R 242,20
78536	Screening Cell Pooled	R 212,46	R 242,20

PATHOLOGY SERVICES

BHF Codes	Nappi Codes	Description	Price Excl. VAT 2017	Price Incl. VAT 2017
78030	709290-001	Designated Serum Eye Drops	R 3 733,02	R 4 255,64
78041	78041	Compatibility Testing QC	R 194,95	R 222,25
78054	708799-001	Autologous Serum Eye Drops	R 3 733,02	R 4 255,64
78090	78090	Medical Examination & Consultation 18-0141	R 301,92	R 344,19
78106	78106	Therapeutic Plasma Exchange	R 10 115,17	R 11 531,29
78129	78129	Therapeutic Venesection	R 73,54	R 83,84
78204	78204	Red Cell Exchange	R 6 752,49	R 7 697,84
78211	78211	Thrombocytapheresis	R 6 819,98	R 7 774,78
78213	78213	Tissue Rapid HBsAg Screen	R 284,17	R 323,96
78214	78214	Tissue Rapid HIV Screen	R 284,17	R 323,96
78225	78225	Perinatal Post-Natal Mother	R 167,04	R 190,42
78230	78230	Human Platelet Antibody Screen	R 2 528,21	R 2 882,15
78231	78231	Bone Marrow Engraftment Monitoring	R 1 251,19	R 1 426,36
78416	78416	Therapeutic Exchange (DALI)	R 12 573,86	R 14 334,19
78850	78850	Topical Haemostatic Agent Single Dose	R 348,18	R 396,92
78851	78851	Chronic Wound Treatment Kit Single Dose	R 292,42	R 333,36
78852	78852	Platelet Growth Factor Macular Single Dose	R 290,30	R 330,94
78920	78920	Cord Blood Cryopreservation	R 9 181,21	R 10 466,58
78921	78921	Human Platelet AG Genotyping	R 1 749,10	R 1 993,98
78922	78922	Rapid CMV Screen	R 173,41	R 197,69
78923	78923	Re-Infusion of Cryo Preserve Stem Cells	R 698,61	R 796,41
78926	78926	Stem Cell Collection/Leucopheresis	R 12 767,65	R 14 555,12
78928	78928	Stem Cell Cryopreservation	R 9 181,21	R 10 466,58

MISCELLANEOUS

BHF Codes	Nappi codes	Description	Price Excl. VAT 2017	Price Incl. VAT 2017
10298	804088004	Stabilised Human Serum 5% 250ml	POA	POA
10299	703325003	Stabilised Human Serum 5% 50ml	POA	POA
10300		Albusol 4% 200 ml	R 366,05	R 417,30
10310		Albusol 20% 100 ml	R 706,49	R 805,40
10311		Albusol 20% 50 ml	R 411,49	R 469,10
600		Emergency Blood Fridge	R 487,50	R 555,75
78100		Paternity Investigation - 1 Client	R 1 351,26	R 1 540,43
78950		Paternity Investigation - 3 Client	R 4 053,86	R 4 621,40
78535		Blood Pack For Therapeutic Venesection	R 231,95	R 264,43
78203		Blood Pack With Anticoagulant	R 101,86	R 116,13
78206	410993-018	Blood Pack, No Anticoagulant	R 145,78	R 166,19

2017 BLOOD AND PLATELET PRODUCTS PRICES

SANBS-BHF Codes

Red Cells	Nappi Codes	Description	Price Excl. VAT 2017	Price Incl. VAT 2017
78040	708800-001	Red Cell Concentrate	R 1 554,52	R 1 772,15
78051	708802-001	Red Cell Conc. Leucocyte Depleted	R 2 540,00	R 2 895,60
78043	708803-001	Red Cell Conc. Paed. Leucodepleted	R 1 436,65	R 1 637,78

Platelets	Nappi Codes	Description	Price Excl. VAT 2017	Price Incl. VAT 2017
78124	708804-001	Platelet Conc. Single Donor Apherisis	R 9 009,49	R 10 270,81
78125	708805-001	Platelet Conc. Leucocyte Depleted, Pooled	R 8 245,99	R 9 400,43
78127	708808-001	Platelet Concentrate (Paediatric)	R 1 976,56	R 2 253,28
78122	708806-001	Platelet Concentrate Pooled	R 6 549,31	R 7 466,22

Whole Blood	Nappi Codes	Description	Price Excl. VAT 2017	Price Incl. VAT 2017
78001	708807-001	Whole Blood	R 1 721,53	R 1 962,55
78059	708809-001	Whole Blood Leucocyte Depleted	R 2 707,03	R 3 086,01
78011	708810-001	Whole Blood Paediatric	R 1 436,65	R 1 637,78

Plasma	Nappi Codes	Description	Price Excl. VAT 2017	Price Incl. VAT 2017
78103	708811-001	Cryoprecipitate (Fibrinogen Rich)	R 878,65	R 1 001,66
78174	708812-001	Frozen Plasma - Cryo Poor Donor Retested	R 1 003,25	R 1 143,71
78179	716662-001	Fresh Frozen Plasma - Donor Retested (Paediatric)	R 722,22	R 823,34
78176	708813-001	Fresh Frozen Plasma - Donor Retested	R 1 243,59	R 1 417,70

Blood and Administration Sets	Nappi Codes	Description	Price Excl. VAT 2017	Price Incl. VAT 2017
78199	440415-002	Blood Filters: 1 Units	R 903,66	R 1 030,17
78200	406059-001	Blood Filters: 2 Units	R 1 732,49	R 1 975,04
78197	628761-001	Platelet Filter 3 - 6 Unit PL2VAE	R 1 672,82	R 1 907,01
78201	470471-001	Set, Blood and Plasma Recipient	R 19,25	R 21,94
78202	470474-001	Set, Platelet Recipient	R 90,87	R 103,59
78609		Cryo Preservation Bag	R 731,97	R 834,45

PATHOLOGY SERVICES

Nappi/BHF Codes		Description	Price Excl. VAT 2017	Price Incl. VAT 2017
3709	3709	Antibody Screen/Antiglobulin Test (DAT & IAT)	R 35,79	R 40,80
3710	3710	Antibody Titration	R 70,79	R 80,70
3712	3712	Antibody Identification	R 83,07	R 94,70
3729	3729	Cold Agglutinins	R 35,35	R 40,30
3739	3739	Erythrocyte Count	R 22,11	R 25,20
3762	3762	Haemoglobin	R 17,63	R 20,10
3764	3764	Grouping: A B O Antigen	R 35,35	R 40,30
3765	3765	Grouping: Rh Antigen	R 35,35	R 40,30
3785	3785	Leucocyte Count	R 17,63	R 20,10
3791	3791	Haematocrit	R 17,63	R 20,10
3816	3816	T and B Cells EAC Markers	R 207,46	R 236,50
3834	3834	Red Cell Rh Phenotype	R 97,37	R 111,00
3932	3932	Anti - HIV	R 138,60	R 158,00
3953	3953	Haemolysin/Test Tube Agglutination	R 40,88	R 46,60
4117	4117	Protein: Total	R 30,61	R 34,90
4172	4172	HIV p24 Antigen (Elisa Test)	R 122,11	R 139,20
4425	4425	ACHE Test	R 123,86	R 141,20
4426	4426	HLA Typing Low Res Class 1 DNA-PCR Per Loc	R 983,33	R 1 121,00
4427	4427	HLA Low Res Class II PCR/DNA Locus DQB/DRB1	R 727,54	R 829,40
4428	4428	HLA Typing Low Res Class 1 or 2 DNA-PCR	R 648,86	R 739,70
4430	4430	HIV p24 Antigen	R 241,96	R 275,83
4522	4522	Alpha Feto Protein(AFP): Amnio Fluid	R 122,11	R 139,20
4531	4531	HBsAG/Anti-HCV	R 142,37	R 162,30
4601	4601	Panel Typing: Antibody Class I 4601	R 353,95	R 403,50
4602	4602	Panel Typing: Antibody Det.: Class II	R 432,72	R 493,30
4603	4603	HLA-Specific Locus/Antigen 4603	R 265,53	R 302,70
4604	4604	HLA Class I	R 511,23	R 582,80
4605	4605	HLA Class 2 Typing Serology	R 511,23	R 582,80
4607	4607	Crossmatching T-cells 4607	R 177,02	R 201,80
4608	4608	Crossmatching B-cells 4608	R 373,68	R 426,00
4614	4614	Tissue Rapid HIV Screen	R 117,89	R 134,40
4750	4750	Cell Culture, Blood/Cord Blood	R 151,05	R 172,20
4751	4751	Cell Culture, Products of Conception/Amniotic Fluid	R 453,16	R 516,60
4752	4752	Cell Cult. Chorionic Villus Sample	R 604,21	R 688,80
4754	4754	Karyotyping, Blood/Cord Blood	R 1 359,47	R 1 549,80
4755	4755	Karyotyping, Amniotic Fluid/Chorionic Villus Sample/Prod of Conception	R 2 718,86	R 3 099,50
4757	4757	Additional Analysis, Mosaicism/Staining Procedure	R 704,91	R 803,60

4763	4763	Blood DNA Extraction	R 453,16	R 516,60
4767	4767	Amniotic Fluid : DNA Extraction	R 910,53	R 1 038,00
4769	4769	Amniotic Fluid : Genotype : PCR	R 1 214,04	R 1 384,00
78003	78003	Additional Disposal Kit	R 4 002,14	R 4 562,44
78005	709026-001	Chronic Wound Treatment Kit	R 1 462,06	R 1 666,75
78006	709025-001	Topical Haemostatic Agent	R 1 740,94	R 1 984,68
78007	709027-001	Platelet Growth Factor Macular Hole Repair	R 1 451,47	R 1 654,68
78008	78008	Platelet Growth Factor Wound Treatment	R 644,39	R 734,61
78013	78013	Antibody Identification QC	R 62,46	R 71,21
78014	78014	Aneuploidy Detection	R 1 602,77	R 1 827,16

ADDITIONAL SERVICES AND SURCHARGES

Nappi Codes	Description	Price Excl. VAT 2017	Price Incl. VAT 2017
78050	Irradiation Fee	R 333,42	R 380,10
10210	Transfusion Crossmatch	R 691,70	R 788,54
10333	Type and Screen	R 309,74	R 353,10
78400	Routine Collection Fee	R 169,25	R 192,94
78401	Routine Delivery Fee	R 169,23	R 192,92
78402	Emergency Round Trip	R 1 151,83	R 1 313,09
78403	Emergency One-Way Fee	R 806,29	R 919,17
78989	Telephone Consultation 18-0130	R 237,83	R 271,13
78177	FFP Autologous/Directed Fee	R 168,57	R 192,17
78049	Directed Donation	R 205,78	R 234,59
78406	After Hours	R 349,52	R 398,45
78408	Autologous/Directed WB	R 172,15	R 196,25
78407	Autologous/Directed RCC	R 155,43	R 177,19
78409	Blood Return Basis	R 171,15	R 195,12
78410	Emergency Cross-Match	R 130,33	R 148,58
78412	HLA Match	R 1 218,46	R 1 389,05
78413	Rare Donation	R 1 193,33	R 1 360,40
78415	Washed RCC/WB	R 1 193,33	R 1 360,40
78414	Offsite Charge	R 1 732,01	R 1 974,49
78417	Emergency Blood Surcharge	R 155,46	R 177,23

Board of Directors:

Executives:

- Jackie Thomson (Acting CEO)

Company Secretary:

- M Luthuli

Non-executives:

- G Simelane (Chairman) • A Ramalho • A Christians • D Dondur • W Gumede • P Knox • V Moodley • R Theunissen • R Brand

The SANBS reserves the right to change prices at any time.

For any queries, please contact us on the following

toll-free number: 0800 11 9031

Email: customerservice@sanbs.org.za

Website: www.sanbs.org.za  /theSANBS  /SANBS  theSANBS